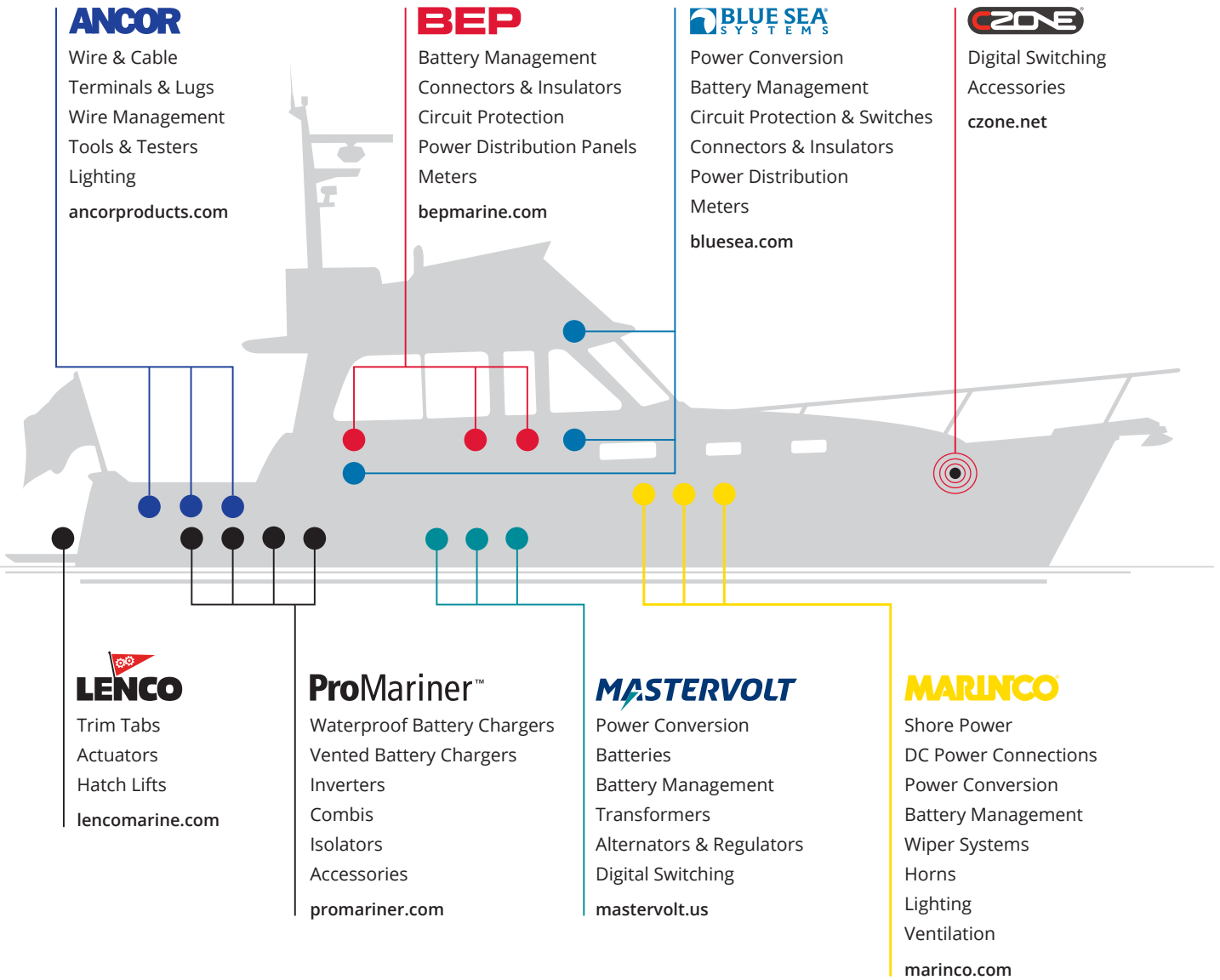




- Electric Trim Tabs
- Auto Glide Automatic Boat Leveling
- Tactile Switch Kits
- Rocker Switch Kits
- Electric Hatch Lifts
- Actuators & Accessories
- Trim Tab Retrofit Kits

For decades Ancor, BEP, Blue Sea Systems, CZone, Lenco, Marinco, Mastervolt and ProMariner have worked independently to provide innovative electrical products. Now the eight companies are working together to offer comprehensive electrical solutions for marine and mobile applications.

Providing more than products. Providing Solutions.





What makes Lenco Marine different:

Company Philosophy

Here at Lenco Marine, we have a passion that can't be taught - it's a commitment to producing quality products and providing excellent customer service that is shared by each and every member of the Lenco team. We work hard every day and are proud to deliver exciting, dependable, environmentally friendly products that will make your time on the water as enjoyable as it should be. Our dedication to quality and attention to detail give every member of the Lenco team the confidence to say, "We make the best boats better!"

Customer Service

Recently awarded IBBI Supplier of the Year honors for the fourth consecutive year in large part due to our dedication to superior customer service

Product Selection

Lenco Marine is the true industry leader in the marine and boating world, manufacturing not only trim tabs but also electric actuators, hatch lifts, switches and the all new Auto Glide boat leveling system

Worldwide Access to Product

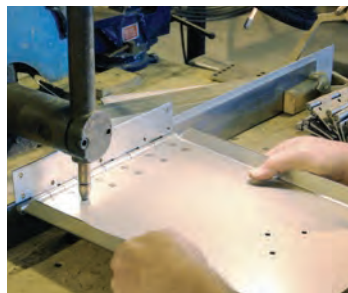
A distribution network in multiple countries provides access to products when they are needed

Information

24-hour access to product information, selection tools, and technical articles online at lencomarine.com

Quality

Our consistent commitment to producing only the highest quality products has proven to be an essential ingredient for the continued growth of the company



NEW Products

17 Hybrid Trim Tab Kits 12 & 24-Volt / Single Actuator

Engineered to combine the benefits and features of our Limited Space and Super Strong series. This ultra-compact design utilizes a greater deflection angle creating substantial lift with less surface area. .



- 15145-101 4x18, 30'-44' boat, single, 12v
- 15146-101 4x24, 42'-52' boat, single, 12v
- 15147-101 4x30, 48'-60' boat, single, 12v
- 15148-101 4x18, 30'-44' boat, single, 24v
- 15149-101 4x24, 42'-52' boat, single, 24v
- 15150-101 4x30, 48'-60' boat, single, 24v

28 Standard Integrated Switch Kit 12 & 24-Volt | Single Actuator Systems

Complete your Lenco single actuator trim tab system with the latest, maintenance-free (ALL-IN-ONE) integrated tactile switch kit design. This switch technology improves accuracy and integrates the control box functionality into the key pad bezel.



15169-001 Standard Integrated Kit, single actuator

28 LED Integrated Switch Single Kit 12 & 24-Volt | Single & Dual Actuator Systems

This NEW switch technology improves accuracy and integrates the control box functionality into the key pad bezel. High-intensity LED Indicator displays show the exact position of your trim tabs at all times.



15170-001 Standard Integrated Kit, single actuator
15171-001 Standard Integrated Kit, dual actuator

29 LED Indicator (TWO-PIECE) Tactile Switch Kit - single actuator

This all NEW LED tactile switch kit for single actuator systems has a shortened bezel for consoles which require less depth to mount. Functionality is built into the externally mounted control box and must be mounted separately.



15270-001 LED Indicator Two-Piece Kit, single actuator

29 LED Indicator (TWO-PIECE) Tactile Switch Kit - dual actuator

This all NEW LED tactile switch kit for dual actuator systems has a shortened bezel for consoles which require less depth to mount. Functionality is built into the externally mounted control box and must be mounted separately.



15271-001 LED Indicator Two-Piece Kit, dual actuator

40 Lower Mounting Bracket Kit For XD and XDS Actuators

To be used in conjunction with new XD and XDS Actuator applications. The older style F3 U-shaped stainless steel lower mounting bracket is now discontinued.



15140-001 LED Indicator Two-Piece Kit, dual actuator

40 101 Actuator Hardware Replacement Kit

Contents of this kit will replace the hardware on our Lenco 101 actuator.



10250-401D Universal Actuator Replace Hardware Kit

32 Flybridge Standard Kits For the NEW Standard Integrated Tactile Switch Kit

Second station Standard Key Pad connecting to the NEW (ALL-IN-ONE) Integrated Tactile Switch Kit (part# 15169-001). Add a second station key pad to your Integrated Tactile Switch by plugging into the existing harness.



- 11841-101 Flybridge Stnd Kit, 10' (3 m) Harness
- 11841-102 Flybridge Stnd Kit, 20' (6.1 m) Harness
- 11841-103 Flybridge Stnd Kit, 30' (9.1 m) Harness
- 11841-104 Flybridge Stnd Kit, 40' (12.2 m) Harness
- 11841-105 Flybridge Stnd Kit, 50' (15.2 m) Harness

32 Flybridge LED Indicator Kits For the NEW LED Indicator Integrated Tactile Switch Kit

Second station LED Key Pad connecting to the NEW (ALL-IN-ONE) Integrated Tactile Switch Kit (part# 15170-001 and/or 15171-001) Add this second station key pad to your NEW Integrated Tactile Switch by plugging into the existing harness.



- 11841-001 Flybridge LED Kit, 10' (3 m) Harness
- 11841-002 Flybridge LED Kit, 20' (6.1 m) Harness
- 11841-003 Flybridge LED Kit, 30' (9.1 m) Harness
- 11841-004 Flybridge LED Kit, 40' (12.2 m) Harness
- 11841-005 Flybridge LED Kit, 50' (15.2 m) Harness

UPDATED Products

32 Flybridge LED Indicator Kits For the NEW LED Indicator (TWO-PIECE) Tactile Switch Kit

Second station LED Key Pad connecting to the NEW (TWO-PIECE) Tactile Switch Kit (part# 15270-001 and/or 15271-001). Add this second station key pad to your NEW (TWO-PIECE) Tactile Switch by plugging into the Y Connector Harness.



- 11941-001 Flybridge LED Kit, 10' (3 m) Harness, Y connector
- 11941-002 Flybridge LED Kit, 20' (6.1 m) Harness, Y connector
- 11941-003 Flybridge LED Kit, 30' (9.1 m) Harness, Y connector
- 11941-004 Flybridge LED Kit, 40' (12.2 m) Harness, Y connector
- 11941-005 Flybridge LED Kit, 50' (15.2 m) Harness, Y connector

41 Lenco Indication Gateway For NMEA 2000 Compatible Systems

Designed to be used in conjunction with our NEW LED Switches and Flybridge Kits. Trim tab position information is sent to your compatible multifunction device allowing you to view your trim tab indication on your screen. Simple Plug & Play installation.



- 15151-001 Lenco Indication Gateway, tee connector
- 15151-002 Flybridge Indication Gateway, tee connector, Harness

12 Complete Trim Tab Kits

Standard Mount and Edge Mount Kits

Everything you need in one box! The Standard & Edge Mount trim tab kit with the added benefit of having the NEW integrated switch choice and power connector all included.



- 15104-102 9x12 Stnd Mt, Standard Integrated Switch
- 15108-103 9x12 Stnd Mt, LED Integrated Switch
- 15105-102 12x12 Stnd Mt, Standard Integrated Switch
- 15109-103 12x12 Stnd Mt, LED Integrated Switch
- 15106-102 12x12 Edge Mt, Standard Integrated Switch
- 15110-103 12x12 Edge Mt, LED Integrated Switch

18 Super Strong Trim Tab Kits Single & Dual Actuator Systems

Designed for sportfishing boats, high-speed cruising boats and large commercial vessels. These trim tab kits have been updated with our new 120 lower mounting brackets. Kits available in both single and dual actuator applications.



- 15018-101 12x18, 24'-40' boat, single, 12v
- 15019-101 12x24, 27'-44' boat, single, 12v
- 15020-101 12x30, 30'-48' boat, single, 12v
- 15021-101 12x36, 33'-52' boat, single, 12v
- 15026-101 12x18, 24'-40' boat, single, 24v
- 15027-101 12x24, 27'-44' boat, single, 24v
- 15028-101 12x30, 30'-48' boat, single, 24v
- 15029-101 12x36, 33'-52' boat, single, 24v



- 15022-101 16x24, 35'-50' boat, dual, 12v
- 15023-101 16x30, 40'-60' boat, dual, 12v
- 15024-101 16x36, 45'-70' boat, dual, 12v
- 15025-101 16x42, 50'-80' boat, dual, 12v
- 15030-101 16x24, 35'-50' boat, dual, 24v
- 15031-101 16x30, 40'-60' boat, dual, 24v
- 15032-101 16x36, 45'-70' boat, dual, 24v
- 15033-101 16x42, 50'-80' boat, dual, 24v

13 Limited Space Trim Tabs with 101 XDS Short Actuators

These Limited Space kits use the XDS actuator and is our most compact trim tab kit which integrates our NEW Crastin 120 lower mounting bracket. Kits also include our NEW 11-gauge stainless steel blades with option of Standard finish or Electro-Polished finish



- 15052-101 4x12, 13" min transom ht, std finish
- 15088-101 4x12, 13" min transom ht, electro-polished

13 Limited Space Trim Tabs with 101 Standard Actuators

These Limited Space kits use the 101 standard actuator and integrates our NEW 11-gauge stainless steel blades with the option of Standard finish or Electro-Polished finish



- 15125-101 4x12, 14.5" min transom ht, std finish
- 15126-101 4x12, 14.5" min transom ht, electro-polished

Table of Contents

ELECTRIC TRIM TAB KITS

Standard Mount Kits	10
Edge Mount Kits	11
Complete Trim Tab Kits	12
Limited Space Kits	13
Airboat Trim Tab Kit	13
Standard Performance Kits	14
Heavy Duty Performance	14
Extreme Duty Performance	15
High Performance Kits	16, 17
Super Strong Kits	18



AUTO GLIDE SYSTEM & ACCESSORIES

Auto Glide Aftermarket Kit	24
Auto Glide Key Pad	24
Auto Glide Control Box	24
Control Box Harness	24
CAN Bus 1-NMEA 2000 Adapter	24, 25
CAN Bus 2-NMEA 2000 GPS	24, 25
NMEA 2000 GPS Antenna Only	24, 25
NMEA 2000 Tee Connector Only	24, 25
Female Terminating Resistor	24, 25
Male Terminating Resistor	24, 25
2.5' NMEA 2000 Power Cable	24, 25
Smartcraft/Merc Adapter	25
Command Lnk/Yam Adapter	25
J1939 Adapter Cable	25
CAN Bus 2-NMEA 2000 Network	25
30260 Series Extension Cables	25
Auto Glide 2nd Station Kits	25
Replacement 2nd Station Key Pad	25
NMEA 2000 GPS Antenna Kit	25
15' (4.6 m) GPS Extension Kit	25
Ext. Cable for CAN Bus 2	25
CAN Bus Splitter Connector Hub	25
GPS Antenna Mounting Bracket	25
Power Pigtails	25
Control Box Mounting Bracket	25



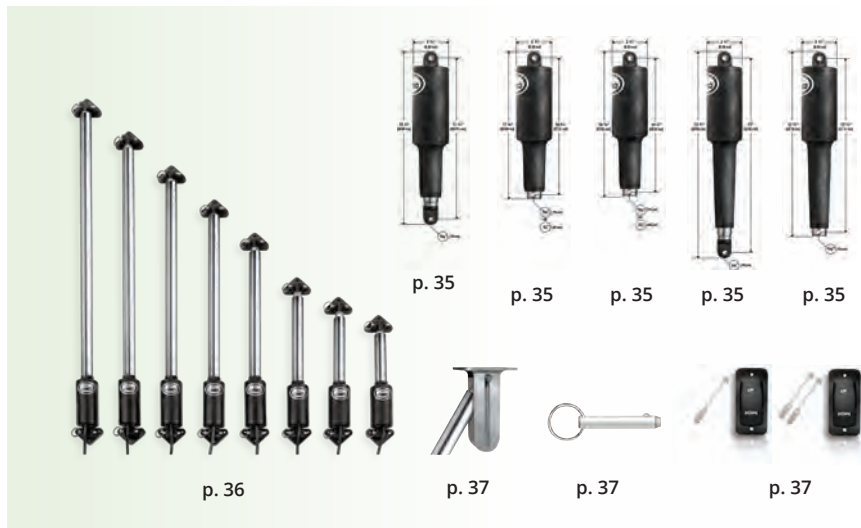
SWITCH KITS & ACCESSORIES

Standard Integrated Switch	28
LED Integrated Switches	28
LED (TWO-PIECE) Switch Single	29
LED (TWO-PIECE) Switch Dual	29
Double Rocker Single w/o Pigtail	29
Double Rocker Switch Single	30
Double Rocker Switch Dual	30
Airboat Trim Tab Rocker Switch	30
Hatchlift Rocker Switch Single	31, 37
Hatchlift Rocker Switch Dual	31, 37
Flybridge Standard (ALL-IN-ONE)	32
Flybridge LED (ALL-IN-ONE)	32
Flybridge LED (TWO-PIECE)	32



ACTUATORS & HATCHLIFTS

101 Standard Actuator	35
101 XD Actuator	35
101 XDS (Short) Actuator	35
102 Actuator	35
102 HD/XD Actuator	35
Electric Hatch Lifts 12-Volt	36
Electric Hatch Lifts 24-Volt	36
Stainless Steel bracket	37
Stainless Steel Pull Pin	37
Hatchlift Rocker Switch Single	31, 37
Hatchlift Rocker Switch Dual	31, 37



REPLACEMENT PARTS & TRIM TAB ACCESSORIES

Bennett Hydraulic to Lenco Electric Limited Space Replacement Blades	38
Most Common Replacement Blades	39
All Other Series Replacement Blades	39
120 Lower Mounting Bracket	40
Upper Mounting Bracket with Gland Seal	40
Standard Upper Bracket with Gland Seal	40
7 Degree Mounting Shim	40
Standard Lower Mounting Bracket	40
Compact Upper Bracket with Gland Seal	40
Hinge & Upper Bracket Screws	40
Actuator Replacement Hardware	40
101 Actuator Hardware	40
Remote Gland Seal Kit	40
3 3/4" & 1 7/8" Sacrificial Anodes	40
Deutsch Plug Kit (Pack of 5)	40
Deutsch Receptacle Kit (Pack of 5)	40
Deutsch Plug Electrical Repair Kit	40
Actuator Extension Harnesses	40
Replacement Hatch Lift Pull Pin	41
Delrin Mounting Pins	41
36" & 72" Power Pigtail for Switches	41
72" Power Pigtail for Control Box	41
Flybridge Key Pad Extension Harnesses	41
Replacement Y Connector Harness	41
Lenco Indication Gateway	41



APPENDIX & INDEX

Part Number Index	42, 43
-------------------	--------



p. 42, 43



Scan QR code
or visit us at
lencomarine.com

WE MAKE THE BEST BOATS BETTER!



Standard Mount Kits

10



Edge Mount Kits

11



Limited Space Kits

13





LENCO ELECTRIC TRIM TABS

Trim tabs make the single most important difference in the way your boat rides and performs. They are optional on some boats but should be as standard as power trim and tilt. Lenco trim tabs make your boat ride smoother, drier, faster and with increased safety whether on a small skiff or a mega-yacht.



INSTANT
RESPONSE



FUEL
EFFICIENT



100%
ELECTRIC



ECO
FRIENDLY



PLUG
& PLAY



AUTO GLIDE
AUTO GLIDE
COMPATIBLE



Airboat Kits

13



High Performance Kits

17



Super Strong Kits

18





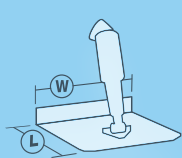
Standard Mount Trim Tab Kits

12-Volt

The series that started the electric revolution! Our original Trim Tab design and still the most popular series we build. Ideal for most common style boats from center console fishing boats to cuddy cabin cruisers. Boat lengths 14' (4.3 m) to 69' (21 m).



Blades are constructed of 12 gauge (2.7 mm) laser cut 304 stainless steel with a 5/8" (1.6 cm) flared trailing edge & 1/8" (3.2 mm) diameter hinge pin. Upper and lower high impact corrosion proof mounting brackets with mechanical cable gland seal.



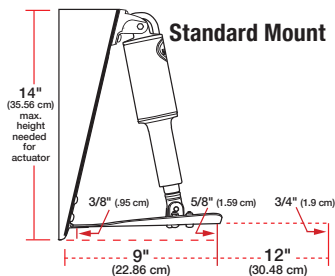
SIZE DESCRIPTION

L = Length of tab
 W = Width of hinge

Size description to be used with chart below.

Kits include:

- ▶ (2) 12-gauge stainless steel standard finish blades
- ▶ (2) 15054-001 actuators with 6' (1.8 m) leads and Deutsch connectors
- ▶ (2) 30133-103 actuator extension wiring harnesses - 20' (6.1 m) length
- ▶ (2) 15085-001 upper mounting brackets with gland seal
- ▶ (2) 50014-001 lower mounting brackets
- ▶ Lenco owner's/installation manual
- ▶ Stainless steel mounting hardware



Standard Mount

Retail Box

See check-list below



Standard Mount Trim Tab Kits - 12-Volt

Lenco Part#	L" X W"	Boat Length	Hinge Height	Min Transom Height	Retail Box
15000-101	9" X 9"	14' - 18'	2" (5.1 cm)	14" (35.6 cm)	✓
15001-101	9" X 12"	16' - 25'	2" (5.1 cm)	14" (35.6 cm)	✓
15002-101	9" X 18"	22' - 30'	2" (5.1 cm)	14" (35.6 cm)	
15003-101	9" X 24"	26' - 40'	1" (2.5 cm)	14" (35.6 cm)	
15004-101	9" X 30"	30' - 50'	1" (2.5 cm)	14" (35.6 cm)	
15005-101	9" X 36"	34' - 65'	1" (2.5 cm)	14" (35.6 cm)	
15007-101	12" X 12"	17' - 30'	2" (5.1 cm)	14" (35.6 cm)	✓
15008-101	12" X 18"	26' - 36'	2" (5.1 cm)	14" (35.6 cm)	
15009-101	12" X 24"	30' - 44'	1" (2.5 cm)	14" (35.6 cm)	
15010-101	12" X 30"	34' - 54'	1" (2.5 cm)	14" (35.6 cm)	
15011-101	12" X 36"	38' - 69'	1" (2.5 cm)	14" (35.6 cm)	

SWITCH KITS SOLD SEPARATELY

See pages 28-30.



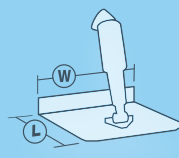
Electro-Polished Standard Mount Trim Tab Kits

12-Volt

All the same features of the Standard Mount series with the addition of Electro-Polished blades. Electro-Polish adds a mirror finish and the ultimate corrosion protection. Boat lengths 16' (4.9 m) to 30' (9.1 m).



Blades are constructed of Electro-Polished 12 gauge (2.7 mm) laser cut 304 stainless steel with a 5/8" (1.6 cm) flared trailing edge & 1/8" (3.2 mm) diameter hinge pin. Upper and lower high impact corrosion proof mounting brackets with mechanical cable gland seal.



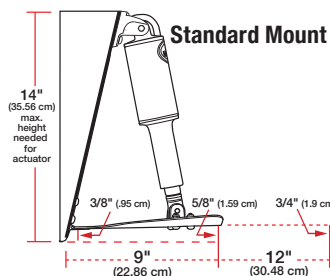
SIZE DESCRIPTION

L = Length of tab
 W = Width of hinge

Size description to be used with chart below.

Kits include:

- ▶ (2) 12-gauge stainless steel Electro-Polished blades
- ▶ (2) 15054-001 actuators with 6' (1.8 m) leads and Deutsch connectors
- ▶ (2) 30133-103 actuator extension wiring harnesses - 20' (6.1 m) length
- ▶ (2) 15085-001 upper mounting brackets with gland seal
- ▶ (2) 50014-001 lower mounting brackets
- ▶ Lenco owner's/installation manual
- ▶ Stainless steel mounting hardware



Standard Mount

Retail Box

See check-list below

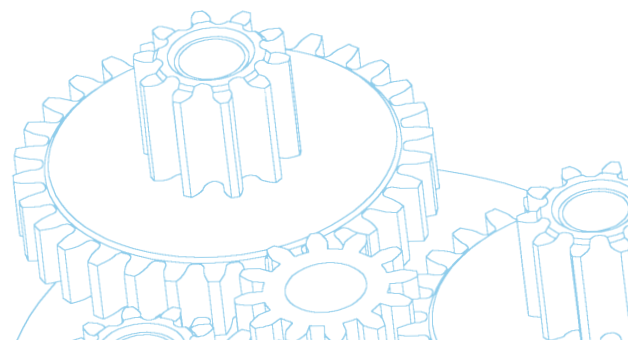


Standard Mount Electro-Polished Trim Tab Kits - 12-Volt

Lenco Part#	L" X W"	Boat Length	Hinge Height	Min Transom Height	Retail Box
15113-101	9" X 12"	16' - 25'	2" (5.1 cm)	14" (35.6 cm)	✓
15114-101	12" X 12"	17' - 30'	2" (5.1 cm)	14" (35.6 cm)	✓

SWITCH KITS SOLD SEPARATELY

See pages 28-30.



Edge Mount Trim Tab Kits

12-Volt

Designed for boat applications where a lower actuator mounting height is desirable. Actuator mounts at the trailing edge of the blade giving it a 1/2" (1.3 cm) lower mounting height on 9" (22.9 cm) long blades & 3" (7.6 cm) lower mounting height on 12" (30.5 cm) long blades. All edges are turned up for added strength and style. Boat lengths 14' (4.3 m) to 36' (11 m).



15016-101

Blades are constructed of 12 gauge (2.7 mm) laser cut 304 stainless steel with 1" (2.5 cm) turned up edges and a 5 degree taper on both sides to the trailing edge, & 1/8" (3.2 mm) diameter hinge pin. Upper and lower high impact corrosion proof mounting brackets with mechanical cable gland seal.

Kits include:

- ▶ (2) 12-gauge stainless steel standard finish blades
- ▶ (2) 15054-001 actuators with 6' (1.8 m) leads and Deutsch connectors
- ▶ (2) 30133-103 actuator extension wiring harnesses - 20' (6.1 m) length
- ▶ (2) 15085-001 upper mounting brackets with gland seal
- ▶ (2) 50014-001 lower mounting brackets
- ▶ Lenco owner's/installation manual
- ▶ Stainless steel mounting hardware

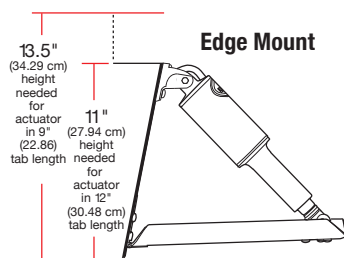


SIZE DESCRIPTION

L = Length of tab

W = Width of hinge

Size description to be used with chart below.



Edge Mount

Retail Box
See check-list below



Edge Mount Trim Tab Kits - 12-volt

Lenco Part#	L" X W"	Boat Length	Hinge Height	Min.Transom Height	Retail Box
15013-101	9" X 9"	14' - 18'	2" (5.1 cm)	13.5" (34.3 cm)	✓
15014-101	9" X 12"	16' - 25'	2" (5.1 cm)	13.5" (34.3 cm)	✓
15015-101	12" X 9"	14' - 18'	2" (5.1 cm)	11" (27.9 cm)	✓
15016-101	12" X 12"	17' - 30'	2" (5.1 cm)	11" (27.9 cm)	✓
15017-101	12" X 18"	26' - 36'	2" (5.1 cm)	11" (27.9 cm)	✓

SWITCH KITS SOLD SEPARATELY

See pages 28-30.

Electro-Polished Edge Mount Trim Tab Kits

12-Volt

All the same features of the Edge Mount series with the addition of Electro-Polished blades. Electro-Polish adds a mirror finish and the ultimate corrosion protection. Actuator mounts at the trailing edge of these 12" (30.5 cm) blades giving them a 3" (7.6 cm) lower mounting height. Boat Lengths 14' (4.3 m) to 30' (9.1 m).



15116-101

Blades are constructed of Electro-Polished 12 gauge (2.7 mm) laser cut 304 stainless steel with a 1" (2.5 cm) turned up edges and a 5 degree taper on both sides to the trailing edge & 1/8" (3.2 mm) diameter hinge pin. Upper and lower high impact corrosion proof mounting brackets with mechanical cable gland seal.

Kits include:

- ▶ (2) 12-gauge stainless steel Electro-Polished blades
- ▶ (2) 15054-001 actuators with 6' (1.8 m) leads and Deutsch connectors
- ▶ (2) 30133-103 actuator extension wiring harnesses - 20' (6.1 m) length
- ▶ (2) 15085-001 upper mounting brackets with gland seal
- ▶ (2) 50014-001 lower mounting brackets
- ▶ Lenco owner's/installation manual
- ▶ Stainless steel mounting hardware

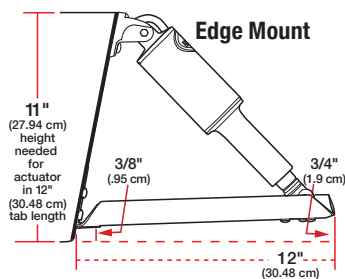


SIZE DESCRIPTION

L = Length of tab

W = Width of hinge

Size description to be used with chart below.



Edge Mount

Retail Box
See check-list below



Edge Mount Electro-Polished Trim Tab Kits - 12-Volt

Lenco Part#	L" X W"	Boat Length	Hinge Height	Min Transom Height	Retail Box
15115-101	12" X 9"	14' - 18'	2" (5.1 cm)	11" (27.9 cm)	✓
15116-101	12" X 12"	17' - 30'	2" (5.1 cm)	11" (27.9 cm)	✓

SWITCH KITS SOLD SEPARATELY

See pages 28-30.

Complete Standard Trim Tab Kits

12-Volt

Everything you need in one box! The Standard trim tab kit with the added benefit of having the NEW integrated switch choice & power connector all included. Boat lengths 16' (4.9 m) to 30' (9.1 m).

UPDATED



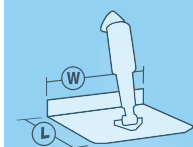
3 switches to choose from:

Double Rocker **NEW** Standard Integrated **NEW** LED Integrated

Blades are constructed of 12 gauge (2.7 mm) laser cut 304 stainless steel with a 5/8" (1.6 cm) flared trailing edge & 1/8" (3.2 mm) diameter hinge pin. Upper and lower high impact corrosion proof mounting brackets with mechanical cable gland seal. Switch included.

Kits include:

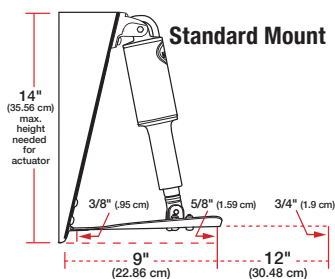
- ▶ (1) Switch Kit - Choose Double Rocker, **NEW** Standard Integrated or **NEW** LED Integrated
- ▶ (2) 12-gauge stainless steel standard finish blades
- ▶ (2) 15054-001 actuators with 6' (1.8 m) leads and Deutsch connectors
- ▶ (2) 30133-103 actuator extension wiring harnesses - 20' (6.1 m) length
- ▶ (2) 15085-001 upper mounting brackets with gland seal
- ▶ (2) 50014-001 lower mounting brackets
- ▶ Lenco owner's/installation manual
- ▶ Stainless steel mounting hardware



SIZE DESCRIPTION

- Ⓛ = Length of tab
- Ⓜ = Width of hinge

Size description to be used with chart below.



Retail Box
Packaged with all kits shown



Lenco Part#	L" X W"	Kit Description	Switch Kit Included
15101-104	9" X 12"	Standard Trim Tab Kit	Double Rocker Switch
15104-102	9" X 12"	Standard Trim Tab Kit	Standard Integrated Switch
15108-103	9" X 12"	Standard Trim Tab Kit	LED Integrated Switch
15103-104	12" X 12"	Standard Trim Tab Kit	Double Rocker Switch
15105-102	12" X 12"	Standard Trim Tab Kit	Standard Integrated Switch
15109-103	12" X 12"	Standard Trim Tab Kit	LED Integrated Switch

Complete Edge Mount Trim Tab Kits

12-Volt

Everything you need in one box! The Edge Mount trim tab kit with the added benefit of having the NEW integrated switch choice & power connector all included. Boat lengths 17' (5.2 m) to 30' (9.1 m).

UPDATED



3 switches to choose from:

Double Rocker **NEW** Standard Integrated **NEW** LED Integrated

Blades are constructed of 12 gauge (2.7 mm) laser cut 304 stainless steel with a 1" (2.5 cm) turned up edges and a 5 degree taper on both sides to the trailing edge & 1/8" (3.2 mm) diameter hinge pin. Upper and lower high impact corrosion proof mounting brackets with mechanical cable gland seal. Switch included.

Kits include:

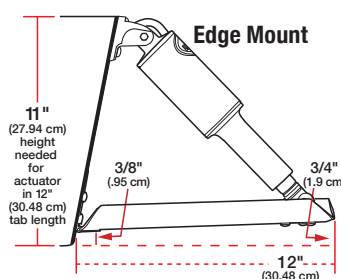
- ▶ (1) Switch Kit - Choose Double Rocker, **NEW** Standard Integrated or **NEW** LED Integrated
- ▶ (2) 12-gauge stainless steel standard finish blades
- ▶ (2) 15054-001 actuators with 6' (1.8 m) leads and Deutsch connectors
- ▶ (2) 30133-103 actuator extension wiring harnesses - 20' (6.1 m) length
- ▶ (2) 15085-001 upper mounting brackets with gland seal
- ▶ (2) 50014-001 lower mounting brackets
- ▶ Lenco owner's/installation manual
- ▶ Stainless steel mounting hardware



SIZE DESCRIPTION

- Ⓛ = Length of tab
- Ⓜ = Width of hinge

Size description to be used with chart below.



Retail Box
Packaged with all kits shown



Lenco Part#	L" X W"	Kit Description	Switch Kit Included
15102-104	12" X 12"	Edge Mount Trim Tab Kit	Double Rocker Switch
15106-102	12" X 12"	Edge Mount Trim Tab Kit	Standard Integrated Switch
15110-103	12" X 12"	Edge Mount Trim Tab Kit	LED Integrated Switch

LS-Limited Space Trim Tab Kits

12-Volt TWO STYLES TO CHOOSE FROM

Engineered to fit behind ladders. This unique design gives you all the benefits of a standard tab in an ultra compact design. These kits are updated with 11-gauge stainless steel blades. Boat lengths 14' (4.3 m) to 25' (7.6 m).

UPDATED



Blades are constructed of a stronger 11-gauge laser cut 304 stainless steel and 3/8"(9.5 mm) diameter hinge pin. Upper and lower high impact corrosion proof mounting brackets with mechanical cable gland seal.

Kits include:

- ▶ (2) **NEW** 11-gauge stainless steel blades with option of standard finish or Electro-Polish finish
- ▶ (2) actuators with 6' (1.8 m) lead and Deutsch connectors
- ▶ (2) 30133-103 actuator extension wiring harnesses - 20' (6.1 m) length
- ▶ (2) 15085-001 upper mounting brackets with gland seal
- ▶ Lower mounting brackets included
- ▶ Lenco owner's/installation manual
- ▶ Stainless steel mounting hardware

SIZE DESCRIPTION
 L = Length of tab
 W = Width of hinge
 Size description to be used with chart below.



Lenco Part#	L" X W"	Min. Transom Height	Hinge Height	Actuators In Kit	Blade Finish
15125-101	4" X 12"	14.5" (36.8 cm)	2" (5.1 cm)	15054-001 Standard	Standard
15126-101	4" X 12"	14.5" (36.8 cm)	2" (5.1 cm)	15054-001 Standard	EP
15052-101	4" X 12"	13" (33 cm)	2" (5.1 cm)	15057-001 XDS	Standard
15088-101	4" X 12"	13" (33 cm)	2" (5.1 cm)	15057-001 XDS	EP

SWITCH KITS SOLD SEPARATELY

See pages 28-30.

Airboat Trim Tab Kit

12-Volt

The world's first Airboat specific design. The planing surface provides greater lift and less drag. Engineered to prevent the tab from digging in during hard turns resulting in a safer ride.



Blade is constructed of 12 gauge (2.7 mm) laser cut 304 stainless steel with a welded on stainless steel adjustable lower actuator mounting bracket & 1/8" (3.2 mm) diameter hinge pin. High impact corrosion proof upper mounting bracket with mechanical cable gland seal.

Kit includes:

- ▶ (1) 12-gauge stainless steel standard finish blade with 2" (5.1 cm) hinge height
- ▶ (1) actuator with 6' (1.8 m) lead and Deutsch connector
- ▶ (1) 30133-002 actuator extension wiring harness - 14' (4.3 m) length
- ▶ (1) 15085-001 upper mounting bracket with gland seal
- ▶ Lower mounting bracket included
- ▶ Lenco owner's/installation manual
- ▶ Stainless steel mounting hardware

SIZE DESCRIPTION
 L = Length of tab
 W = Width of hinge
 Size description to be used with chart below.

Lenco Part#	L" X W"	Actuator In Kit	Description
15112-101	9" X 14"	15055-001	Airboat Kit without Switch

SPECIAL AIRBOAT SWITCH SOLD SEPARATELY



Airboat Trim Tab Switch

Recommended (See page 30)

Airboat Single Rocker Switch with Deutsch Recept. & (2) 30" (76.2 cm) Non-Terminated Power Leads - Clamshell Packaged

15095-001

Standard Performance Trim Tab Kits

12-Volt

Our first series designed specifically for performance. This system comes equipped with a thicker reinforced hinge and complimented with an Electro-Polished finish for added quality and protection. Boat lengths 13' (4 m) to 40' (12.2 m).



15037-101
Electro-Polished



Blades are constructed of Electro-Polished 12 gauge (2.7 mm) laser cut 304 stainless steel with 1" (2.5 cm) turned up edges and a 5 degree taper on the inside, heavy duty hinge with 1/4" (6.4 mm) diameter hinge pin.

Kits include:

- ▶ (2) 12-gauge stainless steel Electro-Polished blades
- ▶ (2) 15054-001 actuators with 6' (1.8 m) leads & Deutsch connectors
- ▶ (2) 30133-103 actuator extension wiring harnesses - 20' (6.1 m) length
- ▶ (2) 15085-001 upper mounting brackets with gland seal
- ▶ (2) 50014-001 lower mounting brackets
- ▶ Lenco owner's/installation manual
- ▶ Stainless steel mounting hardware



SIZE DESCRIPTION

L = Length of tab
W = Width of hinge
Size description to be used with chart below.

Lenco Part#	L" X W"	Boat Length	Hinge Height	Min. Transom Height
15034-101	9" x 9"	13' - 20'	2" (5.1 cm)	13.5" (34.3 cm)
15035-101	9" x 12"	16' - 26'	2" (5.1 cm)	13.5" (34.3 cm)
15036-101	12" x 9"	16' - 26'	2" (5.1 cm)	11" (27.9 cm)
15037-101	12" x 12"	18' - 32'	2" (5.1 cm)	11" (27.9 cm)
15038-101	14" x 12"	19' - 34'	2" (5.1 cm)	11" (27.9 cm)
15039-101	16" x 12"	20' - 36'	2" (5.1 cm)	11" (27.9 cm)
15040-101	18" x 14"	22' - 40'	2" (5.1 cm)	11" (27.9 cm)

SWITCH KITS SOLD SEPARATELY

See pages 28-30.

Heavy Duty (HD) Performance Trim Tab Kits

12-Volt

The Heavy Duty series is designed & built for the boats that need extra strength to support them in rougher water at higher speeds. Boat lengths 18' (5.5 m) to 42' (12.8 m).



15043-101
Electro-Polished

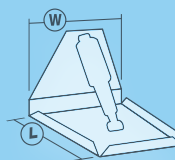


Blades are constructed of Electro-Polished 12 gauge (2.7 mm) laser cut 304 stainless steel with 1" (2.5 cm) turned up edges and a 5 degree taper on the inside, heavy duty hinge with 1/4" (6.4 mm) diameter hinge pin. Full transom back plate with welded on stainless steel upper & adjustable lower actuator mounting brackets, 5/16 (.8 cm) stainless steel mounting bolts & mechanical strain-relief cable seals. 3.75" (9.5 cm) sacrificial anodes installed.

Kits include:

- ▶ (2) 12-gauge stainless steel Electro-Polished blades
- ▶ (2) 15055-001 XD Extreme Duty actuators with 6' (1.8 m) leads & Deutsch connectors
- ▶ (2) 30133-103 actuator extension wiring harnesses - 20' (6.1 m) length
- ▶ Lenco owner's/installation manual
- ▶ **Note:** Boat-mounting hardware to be supplied by the customer

SHIPPED
FULLY
ASSEMBLED

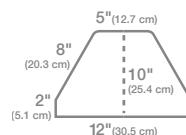


SIZE DESCRIPTION

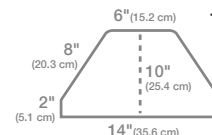
L = Length of tab
W = Width of hinge

Size description to be used with chart below.

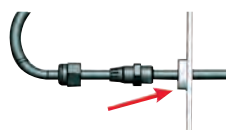
Back Plate Dimensions



15041-101
15042-101
15043-101



15044-101



The actuator leads pass through the water-tight mechanical strain-relief cable seal and the back plate before passing through the transom. This applies to all products with back plates.

Lenco Part#	L" X W"	Boat Length	Min. Transom Height
15041-101	12" X 12"	18' - 34'	10.5" (26.7 cm)
15042-101	14" X 12"	19' - 36'	10.5" (26.7 cm)
15043-101	16" X 12"	20' - 38'	10.5" (26.7 cm)
15044-101	18" X 14"	22' - 42'	10.5" (26.7 cm)

SWITCH KITS SOLD SEPARATELY

See pages 28-30.

Extreme Duty (XD) Performance Trim Tab Kit

12-Volt / Single Actuator

The only single actuator Extreme Duty design offered. This kit is similar to our Heavy Duty Performance series with a thicker, stronger blade for those boaters who run hard in extreme conditions. Boat lengths 20' (6.1 m) to 40' (12.2 m).



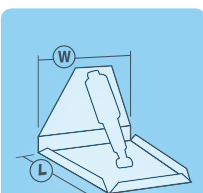
15045-101
Electro-Polished



Blades are constructed of Electro-Polished 10 gauge (3.4 mm) laser cut 304 stainless steel with 1" (2.5 cm) turned up edges and a 5 degree taper on the inside, heavy duty hinge with 3/8" (9.5 mm) diameter hinge pin. Full transom back plate with mechanical strain-relief cable seals, welded on stainless steel upper & adjustable lower actuator mounting brackets, 3/8" (9.5 mm) stainless steel mounting bolts. 3.75" (9.5 cm) sacrificial anodes installed.

Kits include:

- ▶ (2) 10-gauge stainless steel Electro-Polished blades
- ▶ (2) 15056-001 XD Extreme Duty actuators with 6' (1.8 m) leads & Deutsch connectors
- ▶ Lenco owner's/installation manual
- ▶ Note: Boat-mounting hardware to be supplied by the customer
- ▶ **Note: Actuator extension harnesses not in kits, must be purchased separately (2 required) See page 40**

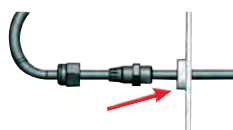
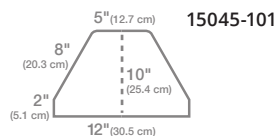


SIZE DESCRIPTION

- Ⓛ = Length of tab
- Ⓜ = Width of hinge

Size description to be used with chart below.

Back Plate Dimensions



The actuator leads pass through the water-tight mechanical strain-relief cable seal and the back plate before passing through the transom. This applies to all products with back plates.

Lenco Part#	L" X W"	Boat Length	Min. Transom Height
15045-101	17" x 12"	20' - 40'	10.5" (26.7 cm)

SWITCH KITS SOLD SEPARATELY

See pages 28-30.

Extreme Duty (XD) Performance Trim Tab Kit

12-Volt / Dual Actuator

All the robust features of our single actuator XD series with twice the actuator power for larger, faster boats that dont back away from rough conditions. Boat lengths 23' (7 m) to 50' (15.2 m).



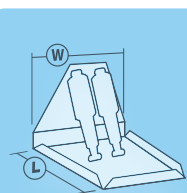
15046-101
Electro-Polished



Blades are constructed of Electro-Polished 10 gauge (3.4 mm) laser cut 304 stainless steel with 1" (2.5 cm) turned up edges and a 5 degree taper on the inside, heavy duty hinge with 3/8" (9.5 mm) diameter hinge pin. Full transom back plate with mechanical strain-relief cable seals, welded on stainless steel upper & adjustable lower actuator mounting brackets, 3/8" (9.5 mm) stainless steel mounting bolts. 3.75" (9.5 cm) sacrificial anodes installed.

Kits include:

- ▶ (2) 10-gauge stainless steel Electro-Polished blades
- ▶ (4) 15056-001 XD Extreme Duty actuators with 6' (1.8 m) leads & Deutsch connectors
- ▶ Lenco owner's/installation manual
- ▶ Note: Boat-mounting hardware to be supplied by the customer
- ▶ **Note: Actuator extension harnesses not in kits, must be purchased separately (4 required) See page 40**

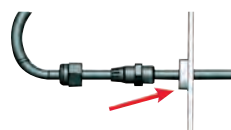
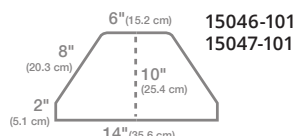


SIZE DESCRIPTION

- Ⓛ = Length of tab
- Ⓜ = Width of hinge

Size description to be used with chart below.

Back Plate Dimensions



The actuator leads pass through the water-tight mechanical strain-relief cable seal and the back plate before passing through the transom. This applies to all products with back plates.

Lenco Part#	L" X W"	Boat Length	Min. Transom Height
15046-101	19" x 14"	23' - 45'	10.5" (26.7 cm)
15047-101	24" x 14"	25' - 50'	10.5" (26.7 cm)

SWITCH KITS SOLD SEPARATELY

See pages 28-30.

WHAT IS ELECTRO-POLISHING?

Electro-Polishing is a process that improves the surface finish of our 304 stainless steel trim tab blades. Electro-Polishing delivers a smoother, more reflective surface than our standard mill finish reducing product adhesion and improving surface cleanability. Electro-Polishing dissolves free iron, inclusions, and embedded particles from the surface of our trim tabs. Lenco's in-house process improves the near-surface chemistry of the material, and promotes the formation of an improved corrosion resistant surface layer.

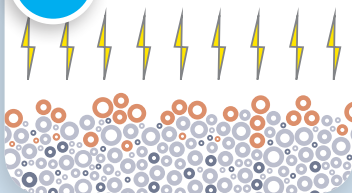


A

- Surface Contaminants
- Chromium & Nickel
- Steel

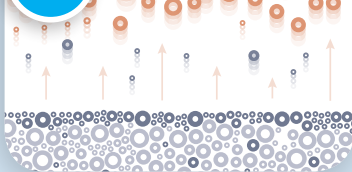
The raw form of all stainless steel has a mixture of unwanted surface contaminants such as iron and much needed elements such as chromium & nickel.

B



An electrical charge is added in order to remove unwanted surface contaminants and concentrate the chromium & nickel at the surface.

C



What is left is a stainless steel that has become much more impervious to the environment with an aesthetically pleasing "BLING" appeal.

BENEFITS OF ELECTRO-POLISHING

- ⚙️ Removes iron and potential contaminants from the surface of our trim tabs.
- ⚙️ Removes a small amount of material from the surface of our trim tab blades, also removing small burrs.
- ⚙️ Enhances the chromium and nickel content providing protection against environmental factors such as air, fresh and salt water.
- ⚙️ Polishes areas inaccessible by any other polishing methods.
- ⚙️ Provides a clean and smooth surface that is aesthetically pleasing.



High Performance (HP) Trim Tab Kits

12-Volt / Single Actuator

This powerful, unique series is designed for multiple engine applications with limited transom space. The contoured blade design allows extra space for engines to turn while reducing cavitation to the props. Boat lengths 16' (4.9 m) to 40' (12.2 m).



15049-101
Electro-Polished

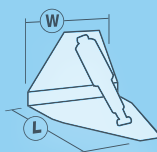


Blades are constructed of Electro-Polished 7 gauge (4.6 mm) laser cut 304 stainless steel with heavy duty hinge with 3/8" (9.5 mm) diameter hinge pin. Full transom back plate with mechanical strain-relief cable seals, welded on stainless steel upper & adjustable lower actuator mounting brackets, 3/8" (9.5 mm) stainless steel mounting bolts. 3.75" (9.5 cm) sacrificial anodes installed.

Kits include:

- ▶ (2) 7-gauge stainless steel Electro-Polished blades
- ▶ (2) 15056-001 XD Extreme Duty actuators with 6' (1.8 m) leads & Deutsch connectors
- ▶ Lenco owner's/installation manual
- ▶ Note: Boat-mounting hardware to be supplied by the customer
- ▶ **Note: Actuator extension harnesses not in kits, must be purchased separately (2 required) See page 40**

SHIPPED
FULLY
ASSEMBLED

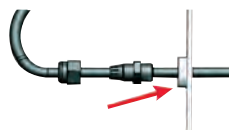
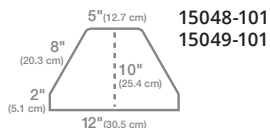


SIZE DESCRIPTION

- Ⓛ = Length of tab
- Ⓜ = Width of hinge

Size description to be used with chart below.

Back Plate Dimensions



The actuator leads pass through the water-tight mechanical strain-relief cable seal and the back plate before passing through the transom. This applies to all products with back plates.

Lenco Part#	L" X W"	Boat Length	Min. Transom Height
15048-101	14" x 12"	16' - 32'	10.5" (26.7 cm)
15049-101	18" x 12"	20' - 40'	10.5" (26.7 cm)

SWITCH KITS SOLD SEPARATELY

See pages 28-30.

High Performance (HP) Trim Tab Kits

12-Volt / Dual Actuator

Same powerful features and unique blade design as the single HP series with double the actuator support for larger, faster boats. Boat lengths 24' (7.3 m) to 52' (15.8 m).



15051-101
Electro-Polished



Blades are constructed of Electro-Polished 7 gauge (4.6 mm) laser cut 304 stainless steel, heavy duty hinge with 3/8" (9.5 mm) diameter hinge pin. Full transom back plate with mechanical strain-relief cable seals, welded on stainless steel upper & adjustable lower actuator mounting brackets, 3/8" (9.5 mm) stainless steel mounting bolts. 3.75" (9.5 cm) sacrificial anodes installed.

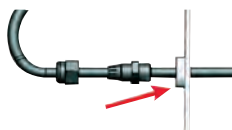
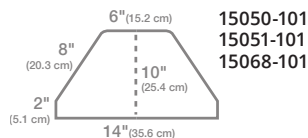
Kits include:

- ▶ (2) 7-gauge stainless steel Electro-Polished blades
- ▶ (4) 15056-001 XD Extreme Duty actuators with 6' (1.8 m) leads & Deutsch connectors
- ▶ Lenco owner's/installation manual
- ▶ Note: Boat-mounting hardware to be supplied by the customer
- ▶ **Note: Actuator extension harnesses not in kits, must be purchased separately (4 required) See page 40**

SHIPPED
FULLY
ASSEMBLED

SIZE DESCRIPTION
 (L) = Length of tab
 (W) = Width of hinge
 Size description to be used with chart below.

Back Plate Dimensions



The actuator leads pass through the water-tight mechanical strain-relief cable seal and the back plate before passing through the transom. This applies to all products with back plates.

Lenco Part#	L" X W"	Boat Length	Min. Transom Height
15050-101	21" x 14"	24' - 42'	10.5" (26.7 cm)
15051-101	25" x 14"	28' - 46'	10.5" (26.7 cm)
15068-101	29" x 14"	30' - 52'	10.5" (26.7 cm)

SWITCH KITS SOLD SEPARATELY

See pages 28-30.

Hybrid Trim Tab Kits

12 & 24-Volt / Single Actuator

Engineered to combine the benefits and features of our Limited Space and Super Strong series. This ultra-compact design utilizes a greater deflection angle creating substantial lift with less surface area. Boat lengths 30' (9.1 m) to 60' (18.3 m).

NEW



Blades constructed of 7 ga. (4.6 mm) laser cut 304 stainless steel with 3/8 (9.5 mm) diameter hinge pin. High impact corrosion proof upper and lower mounting brackets with mechanical gland cable seal, 5/16" (.8 cm) upper and lower stainless steel mounting bolts. Also includes (2) 3.75" (9.5 cm) sacrificial anodes installed.

Kits include:

- ▶ (2) **NEW** 7-gauge stainless steel blades with standard finish
- ▶ (2) Standard actuators with 6' (1.8 m) lead and Deutsch connectors
- ▶ (2) 15085-001 upper mounting brackets with gland seal
- ▶ (2) 50014-001 lower mounting brackets
- ▶ Lenco owner's/installation manual
- ▶ Stainless steel mounting hardware
- ▶ **Note: Actuator extension harnesses not in kits, must be purchased separately (2 required) See page 40**

SIZE DESCRIPTION
 (L) = Length of tab
 (W) = Width of hinge
 Size description to be used with chart below.

Single Actuator System - 12-Volt

Lenco Part#	L" X W"	Boat Length
15145-101	4" x 18"	30' - 44'
15146-101	4" x 24"	42' - 52'
15147-101	4" x 30"	48' - 60'

Single Actuator System - 24-Volt

Lenco Part#	L" X W"	Boat Length
15148-101	4" x 18"	30' - 44'
15149-101	4" x 24"	42' - 52'
15150-101	4" x 30"	48' - 60'

SWITCH KITS SOLD SEPARATELY

See pages 28-30.

Super Strong Trim Tab Kits

12 & 24-Volt / Single Actuator

This Super Strong design is for sport fishing, large cruising and commercial vessels. This series has a completely flat blade design which reduces spray giving you a clean, dry ride. Boat lengths 24' (7.3 m) to 52' (15.8 m).

UPDATED



15018-101



Blades are constructed of 7 gauge (4.6 mm) laser cut 304 stainless steel with 3/8 (9.5 mm) diameter hinge pin. High impact corrosion proof upper and lower mounting brackets with mechanical gland cable seal, 5/16" (.8 cm) upper and 3/8" (9.5 mm) lower stainless steel mounting bolts. 3.75" (9.5 cm) sacrificial anodes installed.

Kits include:

- ▶ (2) 7-gauge stainless steel standard finish blades
- ▶ (2) 15056-002 12-Volt (15063-002 for 24-Volt) XD Extreme Duty actuators with 6' (1.8 m) & Deutsch connectors
- ▶ (2) 15140-001 120 Lower Mounting Brackets
- ▶ Lenco owner's/installation manual
- ▶ Stainless steel mounting hardware
- ▶ **Note: Actuator extension harnesses not in kits, must be purchased separately (2 required) See page 40**



SIZE DESCRIPTION

- Ⓛ = Length of tab
- Ⓜ = Width of hinge

Size description to be used with chart below.

Single Actuator System - 12-Volt

Lenco Part#	L" X W"	Boat Length
15018-101	12" x 18"	24' - 40'
15019-101	12" x 24"	27' - 44'
15020-101	12" x 30"	30' - 48'
15021-101	12" x 36"	33' - 52'

Single Actuator System - 24-Volt

Lenco Part#	L" X W"	Boat Length
15026-101	12" x 18"	24' - 40'
15027-101	12" x 24"	27' - 44'
15028-101	12" x 30"	30' - 48'
15029-101	12" x 36"	33' - 52'

SWITCH KITS & HARNESSES SOLD SEPARATELY

For Switch Kits see pages 28-30.

Harnesses on page 40.

Super Strong Trim Tab Kits

12 & 24-Volt / Dual Actuator

Offering the same features as our single system, this series gives you a longer blade design with dual actuator support for those large vessels needing that extra lift. Boat lengths 35' (10.6 m) to 80' (24.4 m).

UPDATED



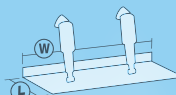
15022-101



Blades are constructed of 7 gauge (4.6 mm) laser cut 304 stainless steel with 3/8 (9.5 mm) diameter hinge pin. High impact corrosion proof upper and lower mounting brackets with mechanical gland cable seal, 5/16" (.8 cm) upper and 3/8" (9.5 mm) lower stainless steel mounting bolts. 3.75" (9.5 cm) sacrificial anodes installed.

Kits include:

- ▶ (2) 7-gauge stainless steel standard finish blades
- ▶ (4) 15056-002 12-Volt (15063-002 for 24-Volt) XD Extreme Duty actuators with 6' (1.8 m) & Deutsch connectors
- ▶ (4) 15140-001 120 Lower Mounting Brackets
- ▶ Lenco owner's/installation manual
- ▶ Stainless steel mounting hardware
- ▶ **Note: Actuator extension harnesses not in kits, must be purchased separately (4 required) See page 40**



SIZE DESCRIPTION

- Ⓛ = Length of tab
- Ⓜ = Width of hinge

Size description to be used with chart below.

Dual Actuator System - 12-Volt

Lenco Part#	L" X W"	Boat Length
15022-101	16" x 24"	35' - 50'
15023-101	16" x 30"	40' - 60'
15024-101	16" x 36"	45' - 70'
15025-101	16" x 42"	50' - 80'

Dual Actuator System - 24-Volt

Lenco Part#	L" X W"	Boat Length
15030-101	16" x 24"	35' - 50'
15031-101	16" x 30"	40' - 60'
15032-101	16" x 36"	45' - 70'
15033-101	16" x 42"	50' - 80'

SWITCH KITS & HARNESSES SOLD SEPARATELY

For Switch Kits see pages 28-30.

Harnesses on page 40.



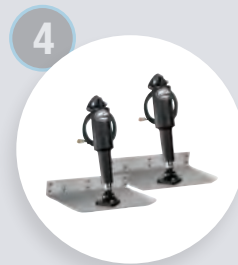
1
Lenco's NEW switch technology improves accuracy & integrates control box functionality into the key pad bezel.



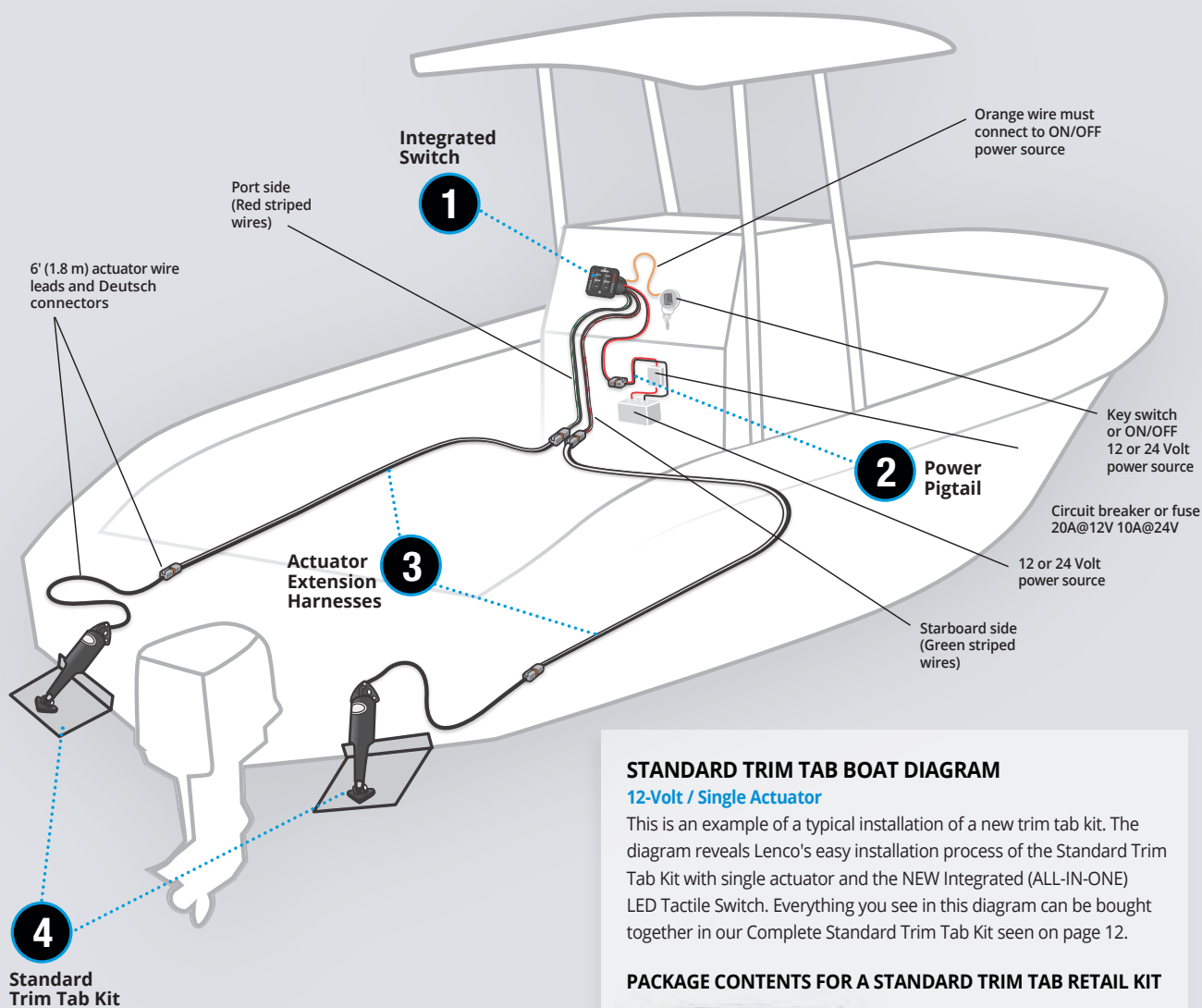
2
These 36" Power Pigtails work with any of our single actuator trim tab system kits (14 Awg wires with DTP Plug).



3
20' Deutsch Connected Actuator Extension Harnesses work with any of our trim tab system kits (14 Awg wires).



4
Our original Standard Trim Tab kit comes with two actuators with 6' leads, Deutsch connectors, blades and hardware.



STANDARD TRIM TAB BOAT DIAGRAM

12-Volt / Single Actuator

This is an example of a typical installation of a new trim tab kit. The diagram reveals Lenco's easy installation process of the Standard Trim Tab Kit with single actuator and the NEW Integrated (ALL-IN-ONE) LED Tactile Switch. Everything you see in this diagram can be bought together in our Complete Standard Trim Tab Kit seen on page 12.

PACKAGE CONTENTS FOR A STANDARD TRIM TAB RETAIL KIT



For complete installation instructions please see our owners manual or visit our troubleshooting page at lencmarine.com



Scan QR code
or visit us at
lencomarine.com

▶ WE MAKE THE BEST BOATS BETTER!

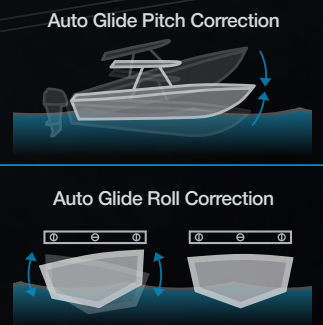


Auto Glide Key Pad



AUTOMATIC BOAT LEVELING SYSTEM

The Lenco Auto Glide helps take your mind off of balancing your boat and back to enjoying your time on the water. Your budget will be balanced as well with the world's best fuel efficiency features. Balance your time, your boat and your budget with the Lenco Auto Glide Boat Leveling System.



FUEL EFFICIENT

100% COMPATIBLE

GPS TECHNOLOGY

ECO FRIENDLY

PLUG & PLAY

PRODUCT CERTIFIED

made in USA



AUTO GLIDE™

AUTO GLIDE FROM LENCO MARINE

Hands Free Trim Tab Control for the Best Ride on the Water

Auto Glide is the most advanced automatic trim tab control system ever developed for the marine industry. First introduced in 2009 by Lenco Marine, Auto Glide has the sophisticated features to optimize the performance of your boat.

What is Auto Glide

Auto Glide is an automatic boat leveling system that uses sophisticated accelerometers, gyroscopes, and advanced software to optimize the performance of the vessel. Auto Glide keeps the boat level at all times regardless of cruising speeds. It has the ability to utilize GPS data and engine data to make the vessel run at the most efficient running angle.

The proper use of trim tabs makes a tremendous difference in boat performance. We have developed Auto Glide to maximize the benefits of trim tabs while simplifying operation and control. Auto Glide is constantly working to make your boat the best it can be - offering a softer, smoother and more comfortable ride.



Intuitive design and control

Auto Glide operation is simple and intuitive. The integrated keypad provides automatic or manual control of the trim tabs. Favorite settings can be programmed and saved based on user preference. Auto Glide can connect to the NMEA 2000 network, so trim tab position can be displayed on a NMEA 2000 multi-function screen. In addition, Auto Glide has built in diagnostics. In the event of a system issue, the keypad LED lights will flash indicating an error code.



Enhance boat performance with Auto Glide

Auto Glide improves the performance of the boat, and optimizes the ride in any conditions. Some of the benefits of Auto Glide are:

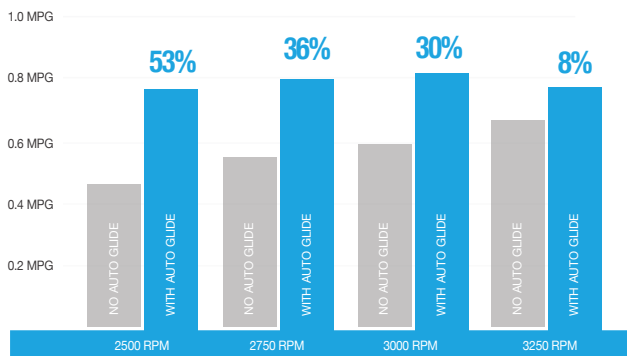
- ▶ Automatic pitch and roll corrections.
- ▶ Automatically trims boat to the most fuel efficient position.
- ▶ Takes the trim tab operation out of the hands of the operator while allowing for manual override at the touch of a button.
- ▶ Reduces time to plane.
- ▶ Does not adjust during turns, allowing boat to roll naturally.
- ▶ Safety - Minimizes bow rise and improves boat's hole shot performance.
- ▶ Built-in automatic trim tab retraction.
- ▶ Waterproof key pad and control box.
- ▶ Three custom settings: "Hold" mode and (2) "Favorite" modes.
- ▶ Increase in fuel savings.
- ▶ Can be installed on any boat with Lenco electric actuators.
- ▶ Fast and easy installation.



Installation drawings and information available on lencoautoglide.com

Fuel efficiency at its best

Auto Glide uses data it receives 25 times a second to monitor changes in the GPS speed and engine RPM to automatically put your boat in its most fuel efficient cruising position.



"All of the system adjustments achieve two very important objectives. One of course is fuel economy but the more important one to us is a more stable and comfortable ride particularly in rough seas."

Bill Hayward

Bill Hayward
Cruisers Yacht 48'



*Fuel saving results are based on Cruisers Yachts 48 Cantius with a Volvo D6, 600 IPS, EVC, 435 horsepower engine. Results may vary depending on boat type & engine configuration.

Testimonials

Listen to what these Auto Glide customers have to say:

"Enjoying the ride is the most important thing to me. The Auto Glide helps me to forget about controlling my trim tabs and enjoy my experience on the water."

Jose Chao
Jose Chao
*1971 Seabird 27'



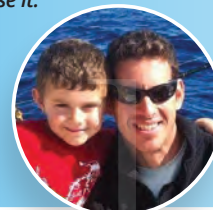
"The combination of the High Performance Trim Tabs and the Auto Glide System makes my SeaVee perform like a sports car. I would never have a boat with out it."

Adam Meyerson
Adam Meyerson
2010 SeaVee 29



"I can't believe the difference, this thing is amazing!!! I cannot express how happy and content I am with this system. Only regret is it took me so long to purchase it."

Frank Naylor
Frank Naylor
2000 Contender 31'



* The 1971 Seabird 27' was Retrofitted using the Lenco Conversion & Performance Upgrade Kit found on page 38.



UPDATED AUTO GLIDE AFTERMARKET KIT CONTENTS



Replacement Parts



Retail Box

Auto Glide Aftermarket Kits for Boats with Existing NMEA 2000 Networks

(Does not Include GPS Antenna & NMEA 2000 Network)

- 15504-101** Kit Without GPS Antenna or Network - For Single Actuator Trim Tab Systems
- 15505-101** Kit Without GPS Antenna or Network - For Dual Actuator Trim Tab Systems

Auto Glide Aftermarket Kits For Boats without Existing NMEA 2000 Networks

(Includes GPS Antenna & NMEA 2000 Network)

- 15500-101** Kit With GPS Antenna or Network - For Single Actuator Trim Tab Systems
- 15501-101** Kit With GPS Antenna or Network - For Dual Actuator Trim Tab Systems



AUTO GLIDE CONTENTS & REPLACEMENT COMPARISON CHART

Lenco Part #	Description of Contents	15500-101 Single Actuator Kit (Quantity in Kit)	15501-101 Dual Actuator Kit (Quantity in Kit)	15504-101 Single Actuator Kit (Quantity in Kit)	15505-101 Dual Actuator Kit (Quantity in Kit)
30254-001D	Auto Glide Key Pad Control	1	1	1	1
30255-001	Auto Glide Control Box - For Single Actuator Trim Tab System	1	N/A	1	N/A
30256-001	Auto Glide Control Box - For Dual Actuator Trim Tab System	N/A	1	N/A	1
30248-001	Auto Glide Control Box Harness - For Single Actuator Trim Tab System	1	N/A	1	N/A
30247-001	Auto Glide Control Box Harness - For Dual Actuator Trim Tab System	N/A	1	N/A	1
30259-001D	CAN bus # 1 NMEA 2000 CABLE - 2.5' (76.2 cm)	1	1	1	1
30262-001D	CAN bus # 2 GPS / NMEA 2000 Network Adapter Cable Assembly - 2.5' (76.2 cm)	1	1	N/A	N/A
30266-001	NMEA 2000 (16 CH) GPS Antenna Only	1	1	N/A	N/A
30267-001D	Tee Connector Only	3	3	N/A	N/A
30268-001D	Terminating Resistor - Female - 120 ohm	2	2	N/A	N/A
30268-002D	Terminating Resistor - Male - 120 ohm	1	1	N/A	N/A
30281-001D	Power Cable - NMEA 2000 Network - 2.5' (76.2 cm)	1	1	N/A	N/A
30140-001D	Single Actuator Power Pigtail	1	N/A	1	N/A
10249-001	Dual Actuator Power Pigtail	N/A	1	N/A	1

AUTO GLIDE ACCESSORIES

AUTO GLIDE™ Adapter Cables

Thumbnail Image	Lenco Part #	Description
	30246-001D	ADAPTER CABLE FOR SMARTCRAFT / MERCURY - 2.5' (76.2 cm)
	30252-001D	ADAPTER CABLE FOR COMMAND LINK / YAMAHA - 2.5' (76.2 cm)
	30277-001D	ADAPTER CABLE FOR J1939 - 2.5' (76.2 cm)
	30259-001D	CAN bus # 1 NMEA 2000 CABLE - 2.5' (76.2 cm)
	30257-001D	CAN bus # 2 GPS / NMEA 2000 GPS ADAPTER - 2.5' (76.2 cm) Use when connecting to NMEA 2000 GPS Antenna / Receiver.

30260 Series Extension Cables for Engine Adapter Cable, CAN 1 & CAN 2 are terminated with 4 pin male to 4 pin female Deutsch connectors

	30260-001D	5' (1.5 m) Extension Cable - Deutsch connectors
	30260-002D	10' (3 m) Extension Cable - Deutsch connectors
	30260-003	20' (6.1 m) Extension Cable - Deutsch connectors
	30260-004	30' (9.1 m) Extension Cable - Deutsch connectors
	30260-005	40' (12.2 m) Extension Cable - Deutsch connectors
	30260-006	50' (15.2 m) Extension Cable - Deutsch connectors
	30262-001D	CAN bus # 2 GPS / NMEA 2000 NETWORK ADAPTER CABLE ASSEMBLY - 2.5' Use when connecting to NMEA 2000 Network (For longer lengths, use GPS vendor's extension or # 30269-001D.)

AUTO GLIDE™ NMEA 2000 Network Accessories

Thumbnail Image	Lenco Part #	Description
	11201-001	NMEA 2000 NETWORK KIT Contents: (1) Power Cable, (5) Tee Connectors and (1) Male / (1) Female Resistor
	30267-001D	TEE CONNECTOR ONLY
	30268-001D	FEMALE TERMINATING RESISTOR 120 ohm
	30268-002D	MALE TERMINATING RESISTOR 120 ohm
	30281-001D	POWER CABLE NMEA 2000 NETWORK - 2.5' (76.2 cm)

AUTO GLIDE™ 2nd Station Kits

Thumbnail Image	Lenco Part #	Description
All (5) Kits seen here include key pad, splitter connector and extension cable		
	11202-001	2ND STATION KIT with 10' (3 m) Extension Cable
	11202-002	2ND STATION KIT with 20' (6.1 m) Extension Cable
	11202-003	2ND STATION KIT with 30' (9.1 m) Extension Cable
	11202-004	2ND STATION KIT with 40' (12.2 m) Extension Cable
	11202-005	2ND STATION KIT with 50' (15.2 m) Extension Cable
	30254-002D	Replacement 2ND STATION KEY PAD ONLY (must only be used at the 2nd station helm)

AUTO GLIDE™ GPS & Accessories

Thumbnail Image	Lenco Part #	Description
	11103-001	NMEA 2000 (16 CH) GPS ANTENNA / RECEIVER KIT Contents: (1) GPS Antenna, (1) Tee Connector and (1) Female Resistor
	30266-001	NMEA 2000 (16 CH) GPS ANTENNA ONLY
	15503-101	15' (4.6 m) GPS ANTENNA EXTENSION KIT Contents: (1) 15' (4.6 m) Extension Cable, (1) Tee Connector and (1) Female Resistor
	30269-003D	2' (60.9 cm) EXT. CABLE FOR CAN bus 2 (Network System) NMEA Female to NMEA Male
	30269-002D	6' (1.8 m) EXT. CABLE FOR CAN bus # 2
	30269-001D	15' (4.6 m) EXT. CABLE FOR CAN bus # 2
	30258-001D	CAN bus SPLITTER CONNECTOR HUB - 6" (15.2 cm)
	70567-001	GPS ANTENNA / RECEIVER MOUNTING BRACKET Stainless Steel with mounting screws

AUTO GLIDE™ Control Box Accessories

Thumbnail Image	Lenco Part #	Description
	30140-001D	36" (91.4 cm) Power Pigtail for Single Actuator Systems
	30140-202D	72" (182 cm) Power Pigtail for Single Actuator Systems
	10249-001	72" (182 cm) Power Pigtail for Dual Actuator Systems
	70568-001	Auto Glide Control Box Mounting Bracket Stainless Steel with mounting screws



Scan QR code
or visit us at
lencomarine.com

WE MAKE THE BEST BOATS BETTER!



Standard Integrated Kit



LED Integrated Switch Kit



LED (TWO-PIECE) Switch Kit





LENCO SWITCH KITS

Lenco's tactile switches are the most innovative trim tab switches on the market today. Lenco is now introducing 4 of it's most inovative switch kits to date. Lenco switches provide instant response at the touch of a button allowing customers to position and balance their boat with ease.



INSTANT
RESPONSE



100%
ELECTRIC



PLUG
& PLAY



PRODUCT
CERTIFIED



made
in USA

Rocker Switch Kit



Airboat Switch



Hatch Lift Switch



Flybridge Switch Kits



Standard Integrated Switch Kit

12 & 24-Volt | Single Actuator Systems

Complete your Lenco single actuator trim tab system with the latest, maintenance-free, Standard (ALL-IN-ONE) integrated tactile switch kit design. This NEW switch technology improves accuracy and integrates the control box functionality into the key pad bezel.

NEW



15169-001
Single Actuator

Features include:

- ▶ Simple, quick, Plug & Play installation
- ▶ Instant response
- ▶ Built-in retractor
- ▶ Low profile key pad design
- ▶ Self-contained key pad with waterproof Plug & Play Deutsch connectors
- ▶ Wiring harness length 30" (76.2 cm) from the back of the switch bezel
- ▶ 36" power pigtail
- ▶ 2 1/16" hole cut-out size, overall key pad size of 2.75" x 2.75"
- ▶ 4.08" clearance required from the back of the key pad's mounting location
- ▶ 3 year warranty



Lenco Part #	Description
15169-001	Standard Integrated Switch Kit with 36" (91.4 cm) Power Pigtail for Single Actuator Systems

Replacement Parts

30140-001D	36" Power Pigtail (See page 41)
------------	---------------------------------

ATTENTION: REPLACEMENT KEY PADS & CONTROL BOXES FOR 2016 AND PRIOR SWITCHES ARE NOT COMPATIBLE WITH THIS SWITCH KIT.



Retail Box

LED Integrated Switch Single Kit

12 & 24-Volt | Single Actuator Systems

Complete your Lenco single actuator trim tab system with the latest, maintenance-free, LED Indicator (ALL-IN-ONE) integrated tactile switch kit design. This NEW switch technology improves accuracy and integrates the control box functionality into the key pad bezel.

NEW



15170-001
Single Actuator

Features include:

- ▶ Simple, quick, Plug & Play installation
- ▶ Instant response
- ▶ Built-in retractor
- ▶ Low profile key pad design
- ▶ Self-contained key pad with waterproof Plug & Play Deutsch connectors
- ▶ Wiring harness length 30" (76.2 cm) from the back of the switch bezel
- ▶ 36" power pigtail
- ▶ 2 1/16" hole cut-out size, overall key pad size of 2.75" x 2.75"
- ▶ 4.08" clearance required from the back of the key pad's mounting location
- ▶ 2 high-intensity LED Indicator displays show the exact position of your trim tabs at all times
- ▶ Photo Eye for optimum viewing in all light conditions
- ▶ Backlit key pad for optimum viewing at night
- ▶ Self-Check feature
- ▶ 3 year warranty



Lenco Part #	Description
15170-001	LED Integrated Switch Kit with 36" (91.4 cm) Power Pigtail for Single Actuator Systems

Replacement Parts

30140-001D	36" Power Pigtail (See page 41)
------------	---------------------------------

ATTENTION: REPLACEMENT KEY PADS & CONTROL BOXES FOR 2016 AND PRIOR SWITCHES ARE NOT COMPATIBLE WITH THIS SWITCH KIT.

LED Integrated Switch Dual Kit

12 & 24-Volt | Dual Actuator Systems

Complete your Lenco dual actuator trim tab system with the latest, maintenance-free, LED Indicator (ALL-IN-ONE) integrated tactile switch kit design. This NEW switch technology improves accuracy and integrates the control box functionality into the key pad bezel.

NEW



15171-001
Dual Actuator

Features include:

- ▶ Simple, quick, Plug & Play installation
- ▶ Instant response
- ▶ Built-in retractor
- ▶ Low profile key pad design
- ▶ Self-contained key pad with waterproof Plug & Play Deutsch connectors
- ▶ Wiring harness length 30" (76.2 cm) from the back of the switch bezel
- ▶ 72" power pigtail
- ▶ 2 1/16" hole cut-out size, overall key pad size of 2.75" x 2.75"
- ▶ 4.08" clearance required from the back of the key pad's mounting location
- ▶ 2 high-intensity LED Indicator displays show the exact position of your trim tabs at all times
- ▶ Photo Eye for optimum viewing in all light conditions
- ▶ Backlit key pad for optimum viewing at night
- ▶ 3 year warranty



Lenco Part #	Description
15171-001	Standard Integrated Switch Kit with 72" (1.8 m) Power Pigtail for Dual Actuator Systems

Replacement Parts

30140-202D	72" Power Pigtail (See page 41)
------------	---------------------------------

ATTENTION: REPLACEMENT KEY PADS & CONTROL BOXES FOR 2016 AND PRIOR SWITCHES ARE NOT COMPATIBLE WITH THIS SWITCH KIT.

LED Indicator (TWO-PIECE) Single Kit
12 & 24-Volt | Single Actuator Systems

This all NEW LED tactile switch kit for single actuator systems has a shortened bezel for consoles which require less depth to mount. Functionality is built into the separate control box and must be mounted in a remote location.



NEW
 15270-001
 Single Actuator



Features include:

- ▶ Simple, quick, Plug & Play installation
- ▶ Instant response
- ▶ Built-in retractor
- ▶ Low profile key pad design
- ▶ Self-contained, solid state control box with waterproof Plug & Play Deutsch connectors
- ▶ 36" power pigtail for control box
- ▶ 2 1/16" hole cut-out size, overall key pad size of 2.75" x 2.75"
- ▶ 2.33" clearance required from the back of the key pad's mounting location
- ▶ 2 high-intensity LED Indicator displays show the exact position of your trim tabs at all times
- ▶ Photo Eye for optimum viewing in all light conditions
- ▶ Backlit key pad for optimum viewing at night
- ▶ Self-Check feature
- ▶ 3 year warranty



Lenco Part #	Description
15270-001	LED Indicator (TWO-PIECE) Switch Kit with 36" (91.4 cm) Power Pigtail for Single Actuator Systems

Replacement Parts	
30343-001	LED (TWO-PIECE) Key pad only
30340-001	(TWO-PIECE) Control box - Single
30140-001D	36" Power Pigtail (See page 41)

ATTENTION: REPLACEMENT KEY PADS & CONTROL BOXES FOR 2016 AND PRIOR SWITCHES ARE NOT COMPATIBLE WITH THIS SWITCH KIT.

LED Indicator (TWO-PIECE) Dual Kit
12 & 24-Volt | Dual Actuator Systems

This all NEW LED tactile switch kit for dual actuator systems has a shortened bezel for consoles which require less depth to mount. Functionality is built into the separate control box and must be mounted in a remote location.



NEW
 15271-001
 Dual Actuator



Features include:

- ▶ Simple, quick, Plug & Play installation
- ▶ Instant response
- ▶ Built-in retractor
- ▶ Low profile key pad design
- ▶ Self-contained, solid state control box with waterproof Plug & Play Deutsch connectors
- ▶ 72" power pigtail for control box
- ▶ 2 1/16" hole cut-out size, overall key pad size of 2.75" x 2.75"
- ▶ 2.33" clearance required from the back of the key pad's mounting location
- ▶ 2 high-intensity LED Indicator displays show the exact position of your trim tabs at all times
- ▶ Photo Eye for optimum viewing in all light conditions
- ▶ Backlit key pad for optimum viewing at night
- ▶ 3 year warranty



Lenco Part #	Description
15271-001	LED Indicator (TWO-PIECE) Switch Kit with 72" (1.8 m) Power Pigtail for Dual Actuator Systems

Replacement Parts	
30343-001	LED (TWO-PIECE) Key pad only
30342-001	(TWO-PIECE) Control box - Dual
30140-202D	72" Power Pigtail (See page 41)

ATTENTION: REPLACEMENT KEY PADS & CONTROL BOXES FOR 2016 AND PRIOR SWITCHES ARE NOT COMPATIBLE WITH THIS SWITCH KIT.

Double Rocker Kit without Pigtail
12 & 24-Volt | Single Actuator Systems

Double Rocker Switch available for Standard Trim Tabs, Standard & HD Performance Tabs single actuator systems. Does not have our Retractor feature. Does not have a power pigtail. Overall key pad size is 2.75" x 2.75". Key pad hole cut-out size is 2.25"



NEW
 10222-201D
 Single Actuator without Pigtail



Kit contents:

- ▶ #122 Carling Double Rocker Switch
- ▶ Plug & Play Deutsch Connectors
- ▶ Installation hardware included
- ▶ Clam shell packaged

Lenco Part #	Description
10222-201D	Standard Integrated Switch Kit for Single Actuator Systems

**Double Rocker Switch Kit Single****12 & 24-Volt | Single Actuator Systems**

Double Rocker Switch available for Standard Trim Tabs, Standard & HD Performance Tabs (single actuator versions). Does not have our Retractor feature. Includes Deutsch connectors, 36" power pigtail and mounting hardware. Overall key pad size is 2.75" x 2.75". Key pad hole cut-out size is 2.25"



10222-211D
Single Actuator with Pigtail

**Kit contents:**

- ▶ #122 Carling Double Rocker Switch
- ▶ Plug & Play Deutsch Connectors
- ▶ 36" Power Pigtail.
- ▶ Installation hardware included
- ▶ Clam shell packaged

Lenco Part #	Description
10222-211D	Standard Integrated Switch Kit with 36" (91.4 cm) Power Pigtail for Single Actuator Systems

Replacement Parts

30140-001D	36" Power Pigtail (See page 41)
------------	---------------------------------

**Double Rocker Switch Kit Dual****12 & 24-Volt | Dual Actuator Systems**

Double Rocker Switch available for all dual actuator trim tab systems. Without Retractor feature. Overall key pad size is 2.75" x 2.75". Key pad hole cut-out size is 2.25"



10221-211D
Dual Actuator with Pigtail

**Kit contents:**

- ▶ #122 Carling Double Rocker Switch
- ▶ Plug & Play Deutsch Connectors
- ▶ 72" Power Pigtail and mounting hardware
- ▶ Installation hardware included
- ▶ Clam shell packaged

Lenco Part #	Description
10221-211D	Double Rocker Switch Kit with 72" (1.8 m) Power Pigtail for Dual Actuator Systems

Replacement Parts

30140-202D	72" Power Pigtail (See page 41)
------------	---------------------------------

**Airboat Trim Tab Rocker Switch****12 & 24-Volt | Single Actuator Systems**

Single Rocker Switch with deutsch connector and two 30" (76.2 cm) non-terminated power leads. Recommended for use with 15112-101 Airboat Trim Tab Kit.



15095-001
Single Actuator

**Kit contents:**

- ▶ Single Rocker Switch
- ▶ Plug & Play Deutsch Connector
- ▶ 30" non-terminated power leads
- ▶ Installation hardware included
- ▶ Clam shell packaged

Lenco Part #	Description
15095-001	Airboat Trim Tab Rocker Switch 12 & 24-Volt for Single Actuator Systems



Hatch Lift Rocker Switch (Single)

12 & 24-Volt | Single Hatch Lift Application

Single Rocker Switch for hatch lifts with two 30" non-terminated power leads. This switch is CE certified and ABYC compliant. It is also 20 amp rated and clam shell packaged.



15096-001
Single Hatchlift

Kit contents:

- ▶ Single Rocker Switch
- ▶ Plug & Play Deutsch Connector
- ▶ 30" non-terminated power leads
- ▶ Installation hardware included
- ▶ Clam shell packaged

Lenco Part #	Description
15096-001	Hatch Lift Rocker Switch (Single) 12 & 24-Volt for Single Hatch Lift Application

Hatch Lift Rocker Switch (Dual)

12 & 24-Volt | Dual Hatch Lift Application

Single Rocker Switch for hatch lifts with two 30" non-terminated power leads. This switch is CE certified and ABYC compliant. It is also 20 amp rated and clam shell packaged.



15098-001
Dual Hatchlift

Features include:

- ▶ Single Rocker Switch
- ▶ Plug & Play Deutsch Connector
- ▶ 30" non-terminated power leads
- ▶ Installation hardware included
- ▶ Clam shell packaged

Lenco Part #	Description
15098-001	Hatch Lift Rocker Switch (Dual) 12 & 24-Volt for Dual Hatch Lift Application



Flybridge Standard Kits
 For the NEW Standard Integrated Tactile Switch Kit
 12 & 24-Volt | Single Actuator Systems

Second station Standard Key Pad connecting to the NEW (ALL-IN-ONE) Integrated Tactile Switch Kit (part# 15169-001). Add a second station key pad to your Integrated Tactile Switch by plugging into the existing harness.



Kit contents:

- ▶ Flybridge Standard Key Pad
- ▶ Shielded Harness 30097-xxx series



Part #	Description
11841-101	Flybridge Standard Key Pad with 10' (3 m) Shielded Harness
11841-102	Flybridge Standard Key Pad with 20' (6.1 m) Shielded Harness
11841-103	Flybridge Standard Key Pad with 30' (9.1 m) Shielded Harness
11841-104	Flybridge Standard Key Pad with 40' (12.2 m) Shielded Harness
11841-105	Flybridge Standard Key Pad with 50' (15.2 m) Shielded Harness

Replacement Parts	
30326-001	Second station key pad only

See page 41 for replacement Flybridge Harnesses.

Flybridge LED Indicator Kits
 For the NEW LED Indicator Integrated Tactile Switch Kit
 12 & 24-Volt | Single and Dual Actuator Systems

Second station Standard Key Pad connecting to the NEW (ALL-IN-ONE) Integrated Tactile Switch Kit (part# 15169-001). Add a second station key pad to your Integrated Tactile Switch by plugging into the existing harness.



Kit contents:

- ▶ Flybridge LED Key Pad
- ▶ Shielded Harness 30097-xxx series



Part #	Description
11841-001	Flybridge LED Key Pad with 10' (3 m) Shielded Harness
11841-002	Flybridge LED Key Pad with 20' (6.1 m) Shielded Harness
11841-003	Flybridge LED Key Pad with 30' (9.1 m) Shielded Harness
11841-004	Flybridge LED Key Pad with 40' (12.2 m) Shielded Harness
11841-005	Flybridge LED Key Pad with 50' (15.2 m) Shielded Harness

Replacement Parts	
30325-001	Second station key pad only

See page 41 for replacement Flybridge Harnesses.

Flybridge LED Indicator Kits
 For the NEW LED Indicator (TWO-PIECE) Tactile Switch Kit
 12 & 24-Volt | Single and Dual Actuator Systems

Second station LED Key Pad connecting to the NEW (TWO-PIECE) Tactile Switch Kit (part# 15270-001 and/or 15271-001). Add this second station key pad to your NEW (TWO-PIECE) Tactile Switch by plugging into the Y Connector Harness.



Kit contents:

- ▶ Flybridge LED Key Pad
- ▶ Shielded Harness 30097-xxx series
- ▶ Y-Connector

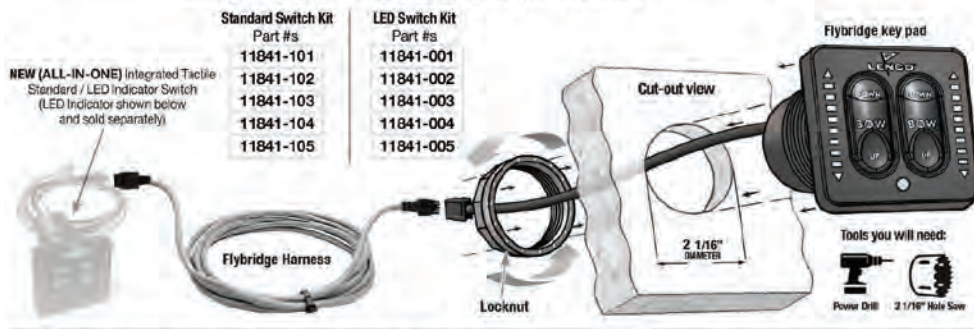


Part #	Description
11941-001	Flybridge LED Key Pad, 10' (3 m) Shielded Harness, Y connector
11941-002	Flybridge LED Key Pad, 20' (6.1 m) Shielded Harness, Y connector
11941-003	Flybridge LED Key Pad, 30' (9.1 m) Shielded Harness, Y connector
11941-004	Flybridge LED Key Pad, 40' (12.2 m) Shielded Harness, Y connector
11941-005	Flybridge LED Key Pad, 50' (15.2 m) Shielded Harness, Y connector

Replacement Parts	
30325-001	Second station key pad only
30209-001	Y-Connector (See page 41)

See page 41 for replacement Flybridge Harnesses.

Flybridge Kit Standard or LED Key Pad connecting to the NEW (ALL-IN-ONE) Integrated Tactile Switch Kit
Wiring Diagram - see chart below for part numbers

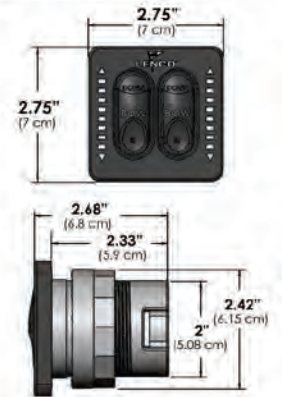


Flybridge Kit LED Key Pad connecting to the NEW (TWO-PIECE) Tactile Switch Kit
Wiring Diagram - see chart below for part numbers



NOTE: See cutout template on inside back cover of our owners manual.

Flybridge Kit Standard or LED Key Pad
Key pad and bezel dimensions and installation instructions



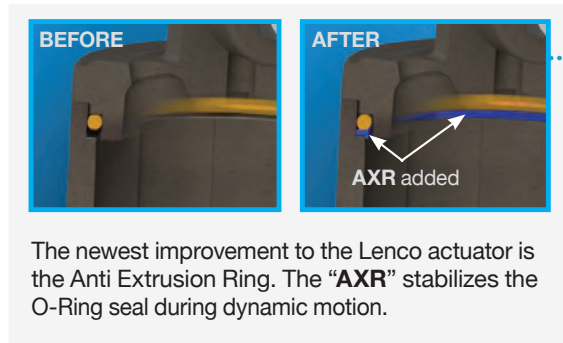
Align the center bit of a 2 1/16" (5.24 cm) hole saw with the cross hairs in the center of the desired mounting area and drill straight down through the console, providing additional clearance for switch and electrical connection. Insert the switch into the console cutout hole then hand-tighten the Bezel Locknut clockwise onto the backside of the key pad.



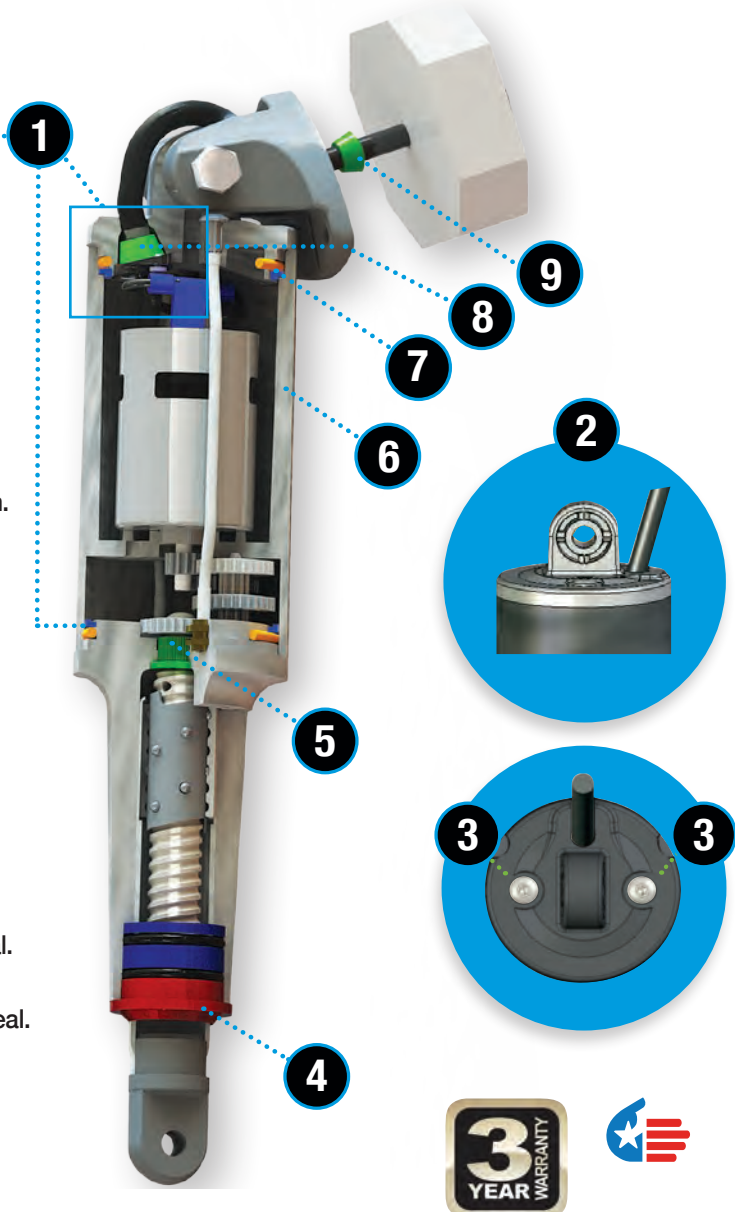
ELECTRIC ACTUATORS 12 & 24-Volt Models

INSTANT RESPONSE ELECTRIC ACTUATORS ARE MADE OF HIGH IMPACT GLASS FIBER FILLED, ULTRAVIOLET-RESISTANT NYLON MATERIAL WITH 316 SUPER BUFF STAINLESS STEEL TUBING.

▶ OUR IMPROVED ACTUATORS



1. Newly implemented AXR seal stabilization system.
2. Stronger top cap and mounting clevis design.
3. New & improved pressure-tight torx screws.
4. Integrated wiper seal at actuator base.
5. Molded-in brass thrust bearing design.
6. Thicker and stronger motor housing wall.
7. Improved O-Ring design for a more consistent seal.
8. Over-molded cable providing a stronger tighter seal.
9. Upper mounting bracket w/ gland seal.



▶ FEATURES

Lenco's ballscrew design is more reliable and twice as powerful compared to typical hydraulics.

Lenco's tough, high-torque actuator motor easily pushes 500 lbs. (227 kg) Available in 12 or 24-Volts.

Lenco Actuator connections use waterproof "Plug & Play" Deutsch connectors eliminating the possibility of water intrusion.



101 Standard Actuator
2 1/4" Stroke (5.715 cm)

The 101 Actuator is used in all Standard, Edge Mount and Standard Performance kits. 2 1/4" stroke - Overall length tip to tip = 12 1/2 inches.

15054-001
12-volt actuator with 5/16" mounting hardware with 6' cable

15061-001
24-volt actuator 5/16" mounting hardware with 6' cable



101 XD Actuator
2 1/4" Stroke (5.715 cm)

The 101 XD Actuator is used mostly with HD, XD, High Performance & Super Strong tabs. 2 1/4" stroke - Overall length tip to tip = 11 3/8 inches.

15055-001
12-volt, 5/16" mounting hardware with 6' cable

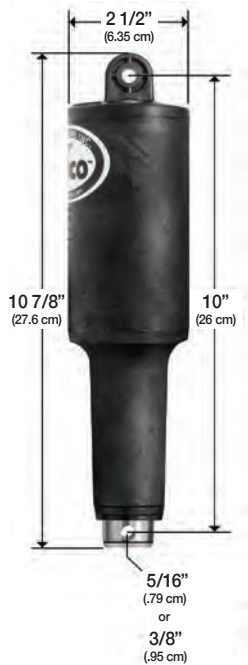
15062-001
24-volt, 5/16" mounting hardware with 6' cable

15056-001
12-volt, 3/8" mounting hardware with 6' cable

15063-001
24-volt, 3/8" mounting hardware with 6' cable

15056-002
(12-volt, 5/16" upper & 3/8" lower mounting hardware with 6' cable)

15063-002
(24-volt, 5/16" upper & 3/8" lower mounting hardware with 6' cable)

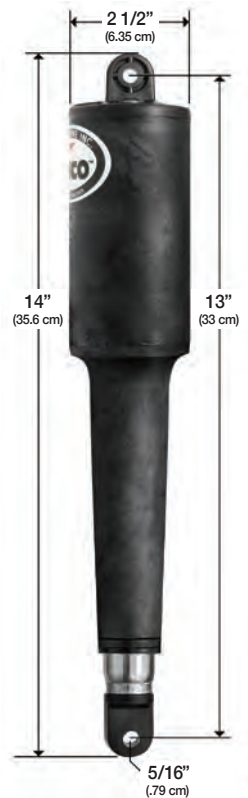


101 XDS (Short) Actuator
2 1/4" Stroke (5.715 cm)

The 101 XDS Actuator is used with OEM specific kits & limited space applications; it is the shortest actuator we manufacture. 2 1/4" stroke - Overall length tip to tip = 10 7/8 inches.

15057-001
12-volt, 5/16" mounting hardware with 6' cable

15058-001
12-volt, 3/8" mounting hardware with 6' cable



102 Actuator
4 1/4" Stroke (10.795 cm)

The 102 Actuator is used with Trolling Tab systems sold prior to 2000 and OEM applications. 4 1/4" stroke. Overall length tip to tip = 14".

15059-001
12-volt, 5/16" mounting hardware with 6' cable

15066-001
24-volt, 5/16" mounting hardware with 6' cable



102 HD/XD Actuator
4 1/4" Stroke (10.795 cm)

The 102 HD Actuator is used with Trolling Tab systems sold after 2000 and OEM applications. 4 1/4" stroke. Overall length tip to tip = 13 inches.

15060-001 (102 HD)
12-volt, 5/16" mounting hardware with 6' cable. (Shown above)

15131-001 (102 HD)
24-volt, 5/16" mounting hardware with 6' cable



Scan QR code or visit us at lencomarine.com

Replacement Actuators are packaged with Deutsch connectors and all stainless steel mounting hardware.

The entire Actuator is fully submersible, maintenance-free and sealed for life with a 3 year warranty.



102 XD Actuator
4 1/4" Stroke (10.795 cm)

15067-001 (102 XD)
Similar to 15060-001 24-volt, 5/16" mounting hardware with 6' cable & an overall length tip to tip of 13 1/4" inches. (Not shown)

ELECTRIC HATCH LIFTS 12 & 24-Volt Models

12 and 24-Volt with 2' (61 cm) leads and deutsch connectors. Inline motor design delivers over 500 lbs. of force. Includes high impact, corrosion proof mounting brackets and stainless steel pull pins.



Hatch Lift Features:

- ▶ Clear anodized aluminum tubing
- ▶ Sizes 4" (10.1 cm) through 30" (76.2) stroke and available in 12 & 24-volt
- ▶ Complete with 2' (61 cm) lead and Deutsch plug (see actuator extension harnesses on page 40)
- ▶ Clutchless ball screw design will not drift, never binds and runs in sync on dual lift applications
- ▶ Inline motor design delivers over 500 lbs. (226.79 Kg) of force
- ▶ Water resistant and made entirely of non-corrosive materials
- ▶ Ball screw spins freely when hatch is fully opened or closed eliminating limit switches and burned out motors
- ▶ High impact, corrosion proof mounting brackets with stainless steel pull pins
- ▶ Powdered metal gears for strength and precision
- ▶ Stainless steel ram locks in any position
- ▶ CE-certified, ignition protected and ABYC compliant



ATTENTION 20 amp circuit breaker & 20 amp rated switch required.

OPTIONAL HATCH LIFT ACCESSORIES AVAILABLE



Stainless Steel Non-locking Slide Bracket
For hatch lifts. In case of power failure, this bracket allows you to pull the hatch open a minimum of 5" (12.7 cm) in order to remove bolt for access.
70381-001



Stainless Steel Pull Pin
Clamshell packaged
60101-001D



Hatch Lift Rocker Switch (Single)
12 & 24-Volt | Single Hatch Lift Application
Rocker Switch for hatch lifts with two 30" non-terminated power leads. This switch is CE certified and ABYC compliant. It is also 20 amp rated and clam shell packaged.
15096-001



Hatch Lift Rocker Switch (Single)
12 & 24-Volt | Dual Hatch Lift Application
Rocker Switch for hatch lifts with two 30" non-terminated power leads. This switch is CE certified and ABYC compliant. It is also 20 amp rated and clam shell packaged.
15098-001

Lenco Electric Hatch Lifts

L.O.A. = Length overall, measuring from top bracket to bottom bracket

12-Volt Models

Lenco Part#	Superseded Part#	Approximate L.O.A. Retracted	Approximate Stroke	Approximate L.O.A. Extended
20760-001	HL-400	15" (38.1 cm)	4" (10.1 cm)	19" (48.3 cm)
20762-001	HL-600	20" (50.8 cm)	6" (15.2 cm)	26" (66.0 cm)
20764-001	HL-800S	20" (50.8 cm)	8" (20.3 cm)	28" (71.1 cm)
20766-001	HL-800	24" (60.9 cm)	8" (20.3 cm)	32" (81.2 cm)
20768-001	HL-1200S	24" (60.9 cm)	12" (30.5 cm)	36" (91.4 cm)
20770-001	HL-1200	29" (73.7 cm)	12" (30.5 cm)	41" (104 cm)
20774-001	HL-1600S	29" (73.7 cm)	16" (40.6 cm)	45" (114 cm)
20776-001	HL-1600	33" (83.8 cm)	16" (40.6 cm)	49" (124 cm)
20778-001	HL-2000S	33" (83.8 cm)	20" (50.8 cm)	53" (134 cm)
20780-001	HL-2000	37" (93.9 cm)	20" (50.8 cm)	57" (144 cm)
20782-001	HL-2400S	37" (93.9 cm)	24" (60.9 cm)	61" (154 cm)
20784-001	HL-2400	41" (104 cm)	24" (60.9 cm)	65" (165 cm)
20786-001	HL-2600	47" (119 cm)	26" (66.0 cm)	73" (185 cm)
20788-001	HL-3000	47" (119 cm)	30" (76.2 cm)	77" (195 cm)

24-Volt Models

20761-001	HL-400/24V	15" (38.1 cm)	4" (10.1 cm)	19" (48.3 cm)
20763-001	HL-600/24V	20" (50.8 cm)	6" (15.2 cm)	26" (66.0 cm)
20765-001	HL-800S/24V	20" (50.8 cm)	8" (20.3 cm)	28" (71.1 cm)
20767-001	HL-800/24V	24" (60.9 cm)	8" (20.3 cm)	32" (81.2 cm)
20769-001	HL-1200S/24V	24" (60.9 cm)	12" (30.5 cm)	36" (91.4 cm)
20771-001	HL-1200/24V	29" (73.7 cm)	12" (30.5 cm)	41" (104 cm)
20775-001	HL-1600S/24V	29" (73.7 cm)	16" (40.6 cm)	45" (114 cm)
20777-001	HL-1600/24V	33" (83.8 cm)	16" (40.6 cm)	49" (124 cm)
20779-001	HL-2000S/24V	33" (83.8 cm)	20" (50.8 cm)	53" (134 cm)
20781-001	HL-2000/24V	37" (93.9 cm)	20" (50.8 cm)	57" (144 cm)
20783-001	HL-2400S/24V	37" (93.9 cm)	24" (60.9 cm)	61" (154 cm)
20785-001	HL-2400/24V	41" (104 cm)	24" (60.9 cm)	65" (165 cm)
20787-001	HL-2600/24V	47" (119 cm)	26" (66.0 cm)	73" (185 cm)
20789-001	HL-3000/24V	47" (119 cm)	30" (76.2 cm)	77" (195 cm)

Bennett Hydraulic-to-Lenco Electric CONVERSION & PERFORMANCE UPGRADE KIT

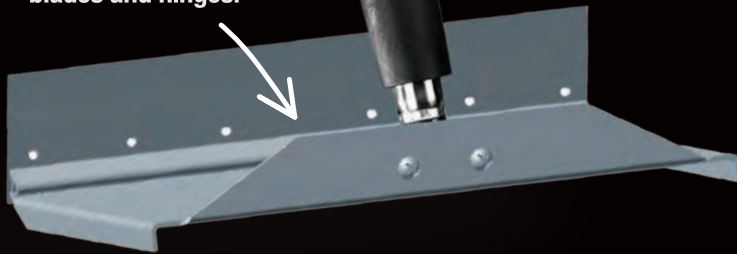
No more replacing unreliable hydraulic pump units.



- ▶ Upgrade to our instant response electric actuators
- ▶ Improved boat performance
- ▶ Eliminate messy hydraulic pump unit
- ▶ Use your existing Bennett trim blades
- ▶ No new holes to drill
- ▶ Retrofits other hydraulic systems with minor modifications

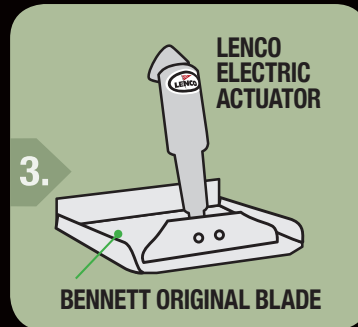
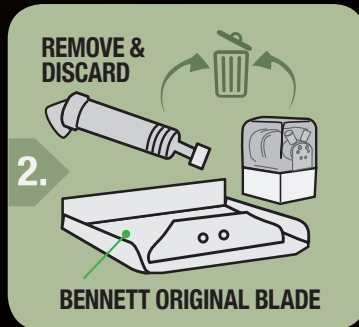
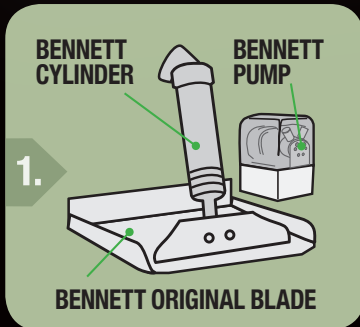


Use existing Bennett trim blades and hinges.

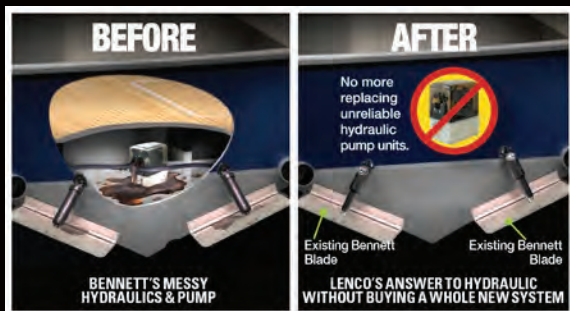


Now you don't have to buy a new boat or an entire new set of trim tabs to get all the advantages of the latest in trim tab technology. Lenco's high-performance instant response actuators are now available to retrofit any boat equipped with the standard length Bennett hydraulic cylinders.

Scan QR code or visit us at lencomarine.com



This simple Conversion & Performance Upgrade Kit includes everything necessary to upgrade your current boat without any drilling or filling of holes. You simply discard the hydraulic pump unit and the two Bennett cylinders. Lenco's new upper mounting brackets fit the existing Bennett mounting holes on the transom. Install the two Lenco electric actuators on your existing Bennett trim blades using the existing lower actuator brackets. Connect our actuator wiring to the existing harness. Jumper wires are included for attaching to current Bennett rocker switch or you may also complement your upgrade kit by adding any Lenco switch kit including the Auto Glide system.



Lenco Part #	Description
15064-001	12-Volt Aftermarket (BRK) Conversion Kit
15065-001	24-Volt Aftermarket (BRK) Conversion Kit



INSTANT RESPONSE



FUEL EFFICIENT



100% ELECTRIC



ECO FRIENDLY

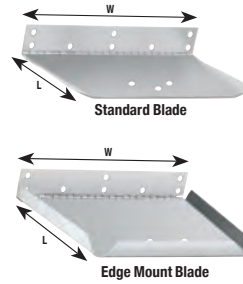


AUTO GLIDE COMPATIBLE



NEW Limited Space Replacement Blades
11 gauge 304 stainless steel blades
Sold individually

Part#	Blade Series	Blade Finish	L"XW"
50480-001	Limited Space	Standard	4 x 12
50480-021	Limited Space	Electro-Polished	4 x 12



Most Common Replacement Blades
12 gauge 304 stainless steel blades
Sold individually

Part#	Blade Series	Blade Finish	L"XW"
20141-001	Standard	Standard	9 x 12
20149-001	Standard	Standard	12 x 12
20150-001	Standard	Standard	12 x 18
20160-001	Edge Mount	Standard	12 x 12

Replacement Blades Stainless steel blades - Sold individually

Part#	Blade Series	L"XW"	Gauge	Blade Finish
20797-001	Limited Space XDS	4 x 12	12	Standard
20797-021	Limited Space XDS	4 x 12	12	Electro-Polish
20974-001	Limited Space 101	4 x 12	12	Standard
20974-021	Limited Space 101	4 x 12	12	Electro-Polish
50480-001	Limited Space	4 x 12	11	Standard
50480-021	Limited Space	4 x 12	11	Electro-Polish
20140-001	Standard Series	9 x 9	12	Standard
20141-001	Standard Series	9 x 12	12	Standard
20141-021	Standard Series	9 x 12	12	Electro-Polish
20142-001	Standard Series	9 x 18	12	Standard
20143-001	Standard Series	9 x 24	12	Standard
20144-001	Standard Series	9 x 30	12	Standard
20145-001	Standard Series	9 x 36	12	Standard
20146-001	Standard Series	9 x 40	12	Standard
20149-001	Standard Series	12 x 12	12	Standard
20149-021	Standard Series	12 x 12	12	Electro-Polish
20150-001	Standard Series	12 x 18	12	Standard
20151-001	Standard Series	12 x 24	12	Standard
20152-001	Standard Series	12 x 30	12	Standard
20153-001	Standard Series	12 x 36	12	Standard
20154-001	Standard Series	12 x 40	12	Standard
20157-001	Edge Mount	9 x 9	12	Standard
20158-001	Edge Mount	9 x 12	12	Standard
20159-001	Edge Mount	12 x 9	12	Standard
20159-021	Edge Mount	12 x 9	12	Electro-Polish
20160-001	Edge Mount	12 x 12	12	Standard
20160-021	Edge Mount	12 x 12	12	Electro-Polish
20161-001	Edge Mount	12 x 18	12	Standard
20072-001	Standard Performance	9 x 9	12	Electro-Polish
20075-001	Standard Performance	9 x 12	12	Electro-Polish
20078-001	Standard Performance	12 x 9	12	Electro-Polish
20081-001	Standard Performance	12 x 12	12	Electro-Polish
20084-001	Standard Performance	14 x 12	12	Electro-Polish
20087-001	Standard Performance	16 x 12 (port)	12	Electro-Polish
20087-002	Standard Performance	16 x 12 (starboard)	12	Electro-Polish
20093-001	Standard Performance	18 x 14 (port)	12	Electro-Polish
20093-002	Standard Performance	18 x 14 (starboard)	12	Electro-Polish
20759-001	Airboat	9 x 12	12	Standard
20845-001	Airboat	9 x 14	12	Standard

Part#	Blade Series	L"XW"	Gauge	Blade Finish
20642-001	Heavy Duty Performance	12 x 12 (port)	12	Electro-Polish
20642-002	Heavy Duty Performance	12 x 12 (starboard)	12	Electro-Polish
20743-001	Heavy Duty Performance	14 x 12 (port)	12	Electro-Polish
20743-002	Heavy Duty Performance	14 x 12 (starboard)	12	Electro-Polish
20646-001	Heavy Duty Performance	16 x 12 (port)	12	Electro-Polish
20646-002	Heavy Duty Performance	16 x 12 (starboard)	12	Electro-Polish
20644-001	Heavy Duty Performance	18 x 14 (port)	12	Electro-Polish
20644-002	Heavy Duty Performance	18 x 14 (starboard)	12	Electro-Polish
20168-001	Super Strong (2016 & Prior)	12 x 18	7	Standard
20169-001	Super Strong (2016 & Prior)	12 x 24	7	Standard
20170-001	Super Strong (2016 & Prior)	12 x 30	7	Standard
20171-001	Super Strong (2016 & Prior)	12 x 36	7	Standard
20172-001	Super Strong (2016 & Prior)	16 x 24	7	Standard
20173-001	Super Strong (2016 & Prior)	16 x 30	7	Standard
20174-001	Super Strong (2016 & Prior)	16 x 36	7	Standard
20175-001	Super Strong (2016 & Prior)	16 x 42	7	Standard
21393-001	Super Strong (2017 +)	12 x 18	7	Standard
21402-001	Super Strong (2017 +)	12 x 24	7	Standard
21452-001	Super Strong (2017 +)	12 x 30	7	Standard
21453-001	Super Strong (2017 +)	12 x 36	7	Standard
21404-001	Super Strong (2017 +)	16 x 24	7	Standard
21403-001	Super Strong (2017 +)	16 x 30	7	Standard
21405-001	Super Strong (2017 +)	16 x 36	7	Standard
21394-001	Super Strong (2017 +)	16 x 42	7	Standard
20380-001	High Performance	14 x 12 (port)	7	Electro-Polish
20380-002	High Performance	14 x 12 (starboard)	7	Electro-Polish
20374-001	High Performance	18 x 12 (port)	7	Electro-Polish
20374-002	High Performance	18 x 12 (starboard)	7	Electro-Polish
20376-001	High Performance	21 x 14 (port)	7	Electro-Polish
20376-002	High Performance	21 x 14 (starboard)	7	Electro-Polish
20378-001	High Performance	25 x 14 (port)	7	Electro-Polish
20378-002	High Performance	25 x 14 (starboard)	7	Electro-Polish
20725-001	High Performance	29 x 14 (port)	7	Electro-Polish
20725-002	High Performance	29 x 14 (starboard)	7	Electro-Polish
20129-001	Extreme Duty Perform.	17 x 12 (port)	10	Electro-Polish
20129-002	Extreme Duty Perform.	17 x 12 (starboard)	10	Electro-Polish
20330-001	Extreme Duty Perform.	19 x 14 (port)	10	Electro-Polish
20330-002	Extreme Duty Perform.	19 x 14 (starboard)	10	Electro-Polish
20623-001	Extreme Duty Perform.	24 x 14 (port)	10	Electro-Polish
20623-002	Extreme Duty Perform.	24 x 14 (starboard)	10	Electro-Polish



Universal Actuator Mounting Bracket Replacement Kit (for 1 Actuator)

15085-001 Upper Mounting Bracket w/ Gland Seal
50015-001 Upper Mounting Bracket w/ Gland Seal
50014-001 Lower Mounting Bracket

Includes all stainless steel hardware and Delrin pin. Clamshell packaged.

15099-001

NEW



120 Lower Mounting Bracket Kit For XD and XDS Actuators

Used in conjunction with new XD and XDS Actuator applications. Includes all stainless steel hardware. Clamshell packaged.

15140-001



Upper Mounting Bracket With Gland Seal

Crastin (3 screw holes, 1 wire hole) 2008 through Current - New Style. Clam shell packaged

15085-001



Standard Upper Mounting Bracket With Gland Seal

Crastin (3 screw holes, 1 wire hole) Previous through 2007 - Old Style. Clam shell packaged

50015-001D



7 Degree Mounting Shim

For Upper & Lower Mounting Bracket - Crastin Clam shell packaged - Only compatible with 50014-001D and 50015-001D

50015-002D



Standard Lower Mounting Bracket

Crastin (3 screw holes) Clam shell packaged

50014-001D



Compact Upper Bracket

Crastin (2 screw holes, 1 wire hole) To be used in applications with limited space - Clam shell packaged

50225-001D



Hinge & Upper Bracket Mounting Screws

44 replacement screws - Clam shell packaged

10030-001D

Replacement Hardware for your Lenco Actuator



Universal Actuator Replacement Hardware Kit

Contents will replace all hardware on any (1) Lenco electric actuator. Clam shell packaged.

10250-410D



Retail Clamshell

FOR USE WITH THESE ACTUATORS:

15054-001	15057-001	15061-001	15066-001	15129-001
15055-001	15058-001	15062-001	15067-001	15130-001
15056-001	15059-001	15063-001	15120-001	15131-001
15056-002	15060-001	15063-002	15122-001	15132-001



Standard Actuator Hardware Kit

Used in conjunction with Lenco 101 & 102 Standard Actuators. Includes all stainless steel hardware and Delrin pins. Clamshell packaged.

10250-401D



Remote Gland Seal Kit

Used as an alternative method by routing the actuator wires through the transom above or below the waterline. Contents: (2) mounts, (2) gland seals and (6) mounting screws. Clam shell packaged.

15084-001



3 3/4" (9.5 cm) Sacrificial Anode

Zinc Sacrificial Anode w/mounting screw. Pack of 2. Clamshell packaged.

15093-001

1 7/8" (4.8 cm) Sacrificial Anode

Zinc Sacrificial Anode w/mounting screw. Pack of 2. Clamshell packaged.

15092-001



Deutsch Plug Kit (Pack of 5)

Actuator and Actuator Extension Harness Deutsch Plug Kit. Includes 5 plugs and 5 wedges. Clam shell packaged.

15107-001



Deutsch Receptacle Kit (Pack of 5)

Actuator Extension Harness Deutsch Receptacle Kit. Includes 5 receptacles and 5 wedges. Clam shell packaged.

15107-002



Deutsch Plug Electrical Repair Kit (16 pieces)

Includes 16 pieces total (plugs, receptacles and wedges). Clam shell packaged.

15086-001



Actuator Extension Harnesses Deutsch Connected & ABYC Compliant

Sold individually - one required per actuator.

Lenco Part #	Description
30133-001D	7' (2.3 m) 16-AWG / Clamshell Packaged
30133-002D	14' (4.3 m) 16-AWG / Clamshell Packaged
30133-103D	20' (6.1 m) 14-AWG / Clamshell Packaged
30142-201	26' (7.9 m) 12-AWG / Poly Bagged
30142-202	32' (9.8 m) 12-AWG / Poly Bagged
30142-104	45' (13.7m) 10-AWG / Poly Bagged



Replacement Hatch Lift Pull Pin
Used in conjunction w/ all Lenco 12 & 24-Volt Hatch Lifts. Clamshell packaged.
60101-001D



72" Power Pigtail
Pigtail for 123DRSCCB Dual Ram Control Box (10-AWG Wires w/ DTHD Plug) Box Packaged.
10249-001



Delrin Mounting Pin (2 pack)
For 101 & 102 Actuators (1.5") Pack of 2
15087-001



Replacement Flybridge Second Station Key Pad Extension Harnesses
For extending the distance between the Key Pad and the control box when the measurement exceeds 34" (86.4 cm)

Delrin Mounting Pin (10 pack)
For 101 & 102 Actuators (1.5")
Dealer pack of 10
15087-002



36" Power Pigtail
36" Pigtail for 124SSR, 123SC & 122 (14-AWG wires w/ DTP Plug) Clam Shell Packaged.
30140-001D

Part #	Description
30097-001	10' Key Pad Extension Harness - Overmolded Connector
30097-002	20' Key Pad Extension Harness - Overmolded Connector
30097-003	30' Key Pad Extension Harness - Overmolded Connector
30097-004	40' Key Pad Extension Harness - Overmolded Connector
30097-005	50' Key Pad Extension Harness - Overmolded Connector

72" Power Pigtail
72" Pigtail for 124SSR, 123SC & 122 (10-AWG Wires w/ DTP Plug) Clam Shell Packaged.
30140-202D



Replacement Y Connector Harness Only
Used in conjunction with our Flybridge LED Indicator Kits. Clamshell packaged.
30209-001D

Lenco Indication Gateway **NEW**

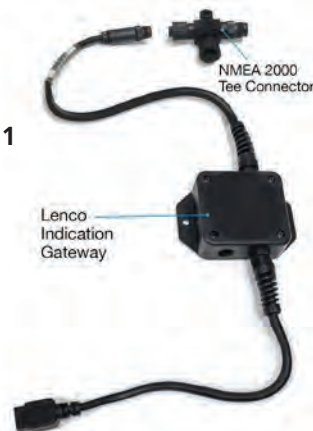
Designed to be used in conjunction with our NEW LED Indicator Switches. Trim tab position information is sent to your compatible multifunction device allowing you to view your trim tab indication on your screen.*

Features include:

- ▶ NMEA 2000 compatible
- ▶ Simple Plug & Play installation
- ▶ Trim tab indication may be viewed on your GPS / Chart Plotter / Sonar Screen*
- ▶ Compatible only with NEW Lenco 2017 MY+ LED Switch Kits
- ▶ Box must be mounted to hard surface in a dry area
- ▶ Cable connector from gateway box to LED switch is 12" in length
- ▶ Cable connector from gateway box to NMEA 2000 connector is 18" in length
- ▶ (1) Tee connector included



VERSION 1
15151-001



VERSION 2
15151-002



VERSION 1 - NMEA 2000 Indication Adapter	
Lenco Part#	For use with NEW (ALL-IN-ONE) LED Switch Kits 15170-001 & 15171-001
15151-001	
VERSION 2 - NMEA 2000 Indication Adapter	
Lenco Part#	For use with: NEW (TWO-PIECE) LED Switch Kits 15270-001 & 15271-001 Flybridge Kits for 15170-001 & 15171-001 Kits, Flybridge Kits for 15270-001 & 15271-001 Kits
15151-002	

PN	Page No.	PN	Page No.	PN	Page No.	PN	Page No.	PN	Page No.
10030-001D	40	15003-101	10	15037-101	14	15068-101	17	15140-001	40
10221-211D	30	15004-101	10	15038-101	14	15084-001	40	15145-101	17
10222-201D	29	15005-101	10	15039-101	14	15085-001	40	15146-101	17
10222-211D	30	15007-101	10	15040-101	14	15086-001	40	15147-101	17
10249-001	24, 25, 41	15008-101	10	15041-101	14	15087-001	41	15148-101	17
10250-401D	40	15009-101	10	15042-101	14	15087-002	41	15149-101	17
10250-410D	40	15010-101	10	15043-101	14	15088-101	13	15150-101	17
11103-001	25	15011-101	10	15044-101	14	15092-001	40	15151-001	41
11201-001	25	15013-101	11	15045-101	15	15093-001	40	15151-002	41
11202-001	25	15014-101	11	15046-101	15	15095-001	13, 30	15169-001	28
11202-002	25	15015-101	11	15047-101	15	15096-001	31, 37	15170-001	28
11202-003	25	15016-101	11	15048-101	16	15098-001	31, 37	15171-001	28
11202-004	25	15017-101	11	15049-101	16	15099-001	40	15270-001	29
11202-005	25	15018-101	18	15050-101	17	15101-104	12	15271-001	29
11841-001	32, 33	15019-101	18	15051-101	17	15102-104	12	15500-101	24
11841-002	32, 33	15020-101	18	15052-101	13	15103-104	12	15501-101	24
11841-003	32, 33	15021-101	18	15054-001	35	15104-102	12	15503-101	25
11841-004	32, 33	15022-101	18	15055-001	35	15105-102	12	15504-101	24
11841-005	32, 33	15023-101	18	15056-001	35	15106-102	12	15505-101	24
11841-101	32, 33	15024-101	18	15056-002	35	15107-001	40	20072-001	39
11841-102	32, 33	15025-101	18	15057-001	35	15107-002	40	20075-001	39
11841-103	32, 33	15026-101	18	15058-001	35	15108-103	12	20078-001	39
11841-104	32, 33	15027-101	18	15059-001	35	15109-103	12	20081-001	39
11841-105	32, 33	15028-101	18	15060-001	35	15110-103	12	20084-001	39
11941-001	32, 33	15029-101	18	15061-001	35	15112-101	13	20087-001	39
11941-002	32, 33	15030-101	18	15062-001	35	15113-101	10	20087-002	39
11941-003	32, 33	15031-101	18	15063-001	35	15114-101	10	20093-001	39
11941-004	32, 33	15032-101	18	15063-002	35	15115-101	11	20093-002	39
11941-005	32, 33	15033-101	18	15064-001	38	15116-101	11	20129-001	39
15000-101	10	15034-101	14	15065-001	38	15125-101	13	20129-002	39
15001-101	10	15035-101	14	15066-001	35	15126-101	13	20140-001	39
15002-101	10	15036-101	14	15067-001	35	15131-001	35	20141-001	39

PN	Page No.	PN	Page No.	PN	Page No.	PN	Page No.	PN	Page No.
20141-021	39	20376-001	39	20775-001	37	30097-005	41	30269-001D	25
20142-001	39	20376-002	39	20776-001	37	30133-001D	40	30269-002D	25
20143-001	39	20378-001	39	20777-001	37	30133-002D	40	30269-003D	25
20144-001	39	20378-002	39	20778-001	37	30133-103D	40	30277-001D	25
20145-001	39	20380-001	39	20779-001	37	30140-001D	24-25,28-30,41	30281-001D	24, 25
20146-001	39	20380-002	39	20780-001	37	30140-202D	25, 28-30, 41	30325-001	32
20149-001	39	20623-001	39	20781-001	37	30142-104	40	30326-001	32
20149-021	39	20623-002	39	20782-001	37	30142-201	40	30340-001	29
20150-001	39	20642-001	39	20783-001	37	30142-202	40	30342-001	29
20151-001	39	20642-002	39	20784-001	37	30209-001D	32, 41	30343-001	29
20152-001	39	20644-001	39	20785-001	37	30246-001D	25	50014-001D	40
20153-001	39	20644-002	39	20786-001	37	30247-001	24	50015-001D	40
20154-001	39	20646-001	39	20787-001	37	30248-001	24	50015-002D	40
20157-001	39	20646-002	39	20788-001	37	30252-001D	25	50225-001D	40
20158-001	39	20725-001	39	20789-001	37	30254-001D	24	50480-001	39
20159-001	39	20725-002	39	20797-001	39	30254-002D	25	50480-021	39
20159-021	39	20743-001	39	20797-021	39	30255-001	24	60101-001D	37, 41
20160-001	39	20743-002	39	20845-001	39	30256-001	24	70381-001	37
20160-021	39	20759-001	39	20974-001	39	30257-001D	25	70567-001	25
20161-001	39	20760-001	37	20974-021	39	30258-001D	25	70568-001	25
20168-001	39	20761-001	37	21393-001	39	30259-001D	24, 25		
20169-001	39	20762-001	37	21394-001	39	30260-001D	25		
20170-001	39	20763-001	37	21402-001	39	30260-002D	25		
20171-001	39	20764-001	37	21403-001	39	30260-003	25		
20172-001	39	20765-001	37	21404-001	39	30260-004	25		
20173-001	39	20766-001	37	21405-001	39	30260-005	25		
20174-001	39	20767-001	37	21452-001	39	30260-006	25		
20175-001	39	20768-001	37	21453-001	39	30262-001D	24, 25		
20330-001	39	20769-001	37	30097-001	41	30266-001	24, 25		
20330-002	39	20770-001	37	30097-002	41	30267-001D	24, 25		
20374-001	39	20771-001	37	30097-003	41	30268-001D	24, 25		
20374-002	39	20774-001	37	30097-004	41	30268-002D	24, 25		

Lenco Marine
4700 SE Municipal Court
Stuart, Florida 34997
p 772.288.2662
f 772.288.2566

www.lencomarine.com
www.lencoautoglide.com
info@lencomarine.com

©2017 Lenco Marine
All rights reserved

Unauthorized copying or
reproduction is a violation
of applicable laws.

A division of
POWER PRODUCTS 

